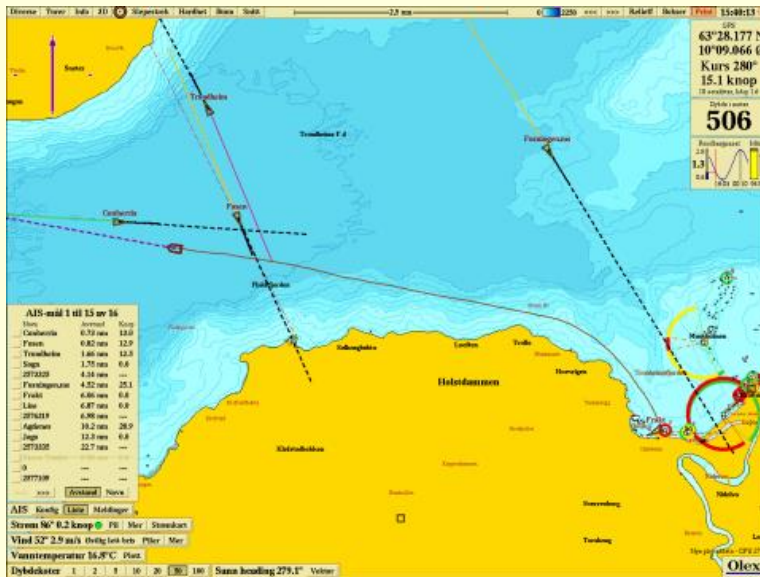


AIS is an automatic identification system which uses the VHF band for transmitting and receiving data from other ships. AIS information supplements marine radar, which continues to be the primary method of collision avoidance for water transport. IMO requires AIS to be fitted aboard international voyaging ships with 300 or more gross tonnage (GT), and all passenger ships regardless of size. The original purpose of AIS was solely collision avoidance but many other applications have since developed and continue to be developed. AIS is currently used for:



- Collision avoidance
- Fishing Monitoring Centers
- Vessel Tracking Services
- Maritime security
- Aids to Navigation
- Search and Rescue
- Accident investigation
- Infrastructure protection
- Fleet and cargo tracking

If Olex has an AIS-receiver connected, and the AIS software module installed, all vessels, which transmit AIS messages within radio range, will appear on the screen. AIS targets will display as triangular boat symbols with their names and MMSI numbers depending on what they are transmitting.

There are 27 different types of top-level messages defined in ITU M.1371-4 (out of a possibility of 64) that can be sent by AIS transceivers. In Olex a click on the AIS button brings up a list of AIS targets sorted by the distance from own ship, or alphabetic by name. From the same button one can view more info about selected vessels, send text messages or configure own ships AIS. It is also possible to send and receive sea floor data from other vessels via AIS, and cooperate in creating a seafloor map, which will appear on both screens as the survey progresses.