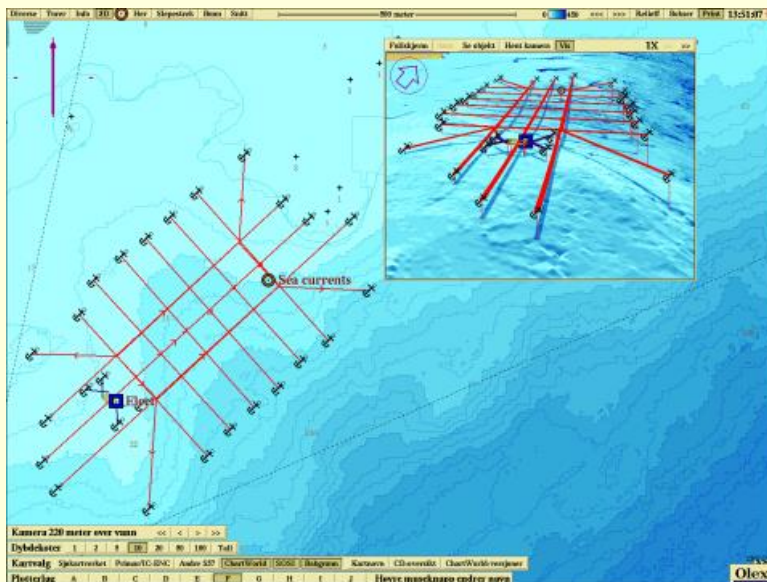


Olex LT is an office-version of Olex. It holds the same functions for presentation of sea floor data, data storage and plotting as an Olex full version, but will not listen to NMEA-sentences from GPS or echosounder. LT follows the same software updates as Olex full version and latest software-upgrade is always available free of charge from our website.



The office version is a freestanding system which later may be upgraded to a full Olex. Any vector charts must be purchased separately.

If needed Olex LT can be amended with additional modules to process and display sea floor hardness and multi beam data. The price for additional modules for an LT is 25% of full price.