

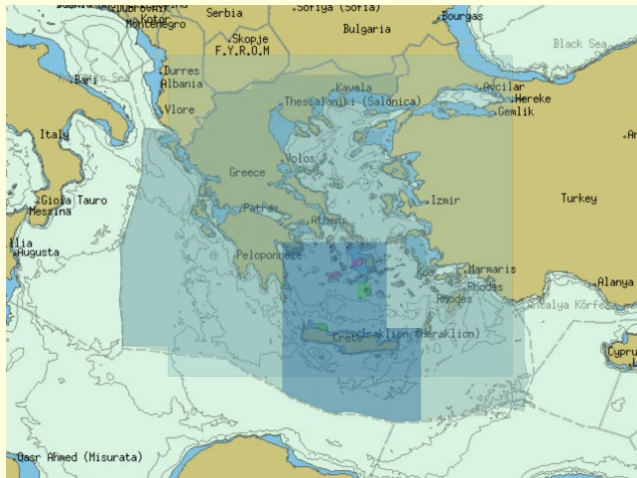
Olex

Marine charting and navigation



The system runs with S-57 electronic vectorized charts. Effective use of digital charts requires fast computer processing. The chart cells are converted into an internal compact format, where they are kept in different crude scaling levels. To achieve this, the coastline and other details have to be recalculated and reduced. In this way the time and memory requirement of the visualization program are kept at a fairly limited and constant level at any zoom scale. The screen will not be filled up with unnecessary information. In the crude scaling level, the

visualization program scales the charts in several steps. In this way a fine and seamless interactive scaling is achieved, without any annoying details related to the organization of the cells.



Olex can use official and unofficial vector charts, in S57, shape and SOSI format, from hydrographic offices and commercial vendors. The navigation charts are displayed alongside the collected seabed data and the chart visualization software will, always strive to achieve a clear and informative chart image and prevent the screen from filling up with unnecessary information, by displaying only information relevant to the current zoom scale. Zooming and chart display are fast, easy and seamless.

Chart Folios for Olex are available covering larger sea areas (i.e., Greece – Turkey & SE Mediterranean) or smaller sea areas of Greece, such as:

- West & South Coast
- South Coast & Crete
- East Coast
- Hellenic Islands of Aegean Sea
- Etc.

Offices: 4, Zosimadon str | Piraeus | 18531 | Greece
Branch : Flisvos Marina, Bld.03 | Paleo Faliro | 17561 | Greece
T: +30 210 4123000 | F: +30 210 4137270