

**SIMRAD®**

2023

MARINE ELECTRONICS FOR  
POWERBOATS AND SPORTFISHING



We create **high performance marine electronics** that can be counted on in any situation.



## TABLE OF CONTENTS

02-03	THE INTEGRATED WORLD OF SIMRAD®
04-05	GLASS BRIDGE NAVIGATION
06-15	MULTIFUNCTION DISPLAYS
16-17	NAVIGATION DISPLAYS
18-21	HALO® RADAR
22-23	RADAR & DEDICATED DISPLAYS
24-27	AUTOPILOTS & INSTRUMENTS
28-33	SONAR & TRANSDUCERS
34-35	MARINE COMMUNICATIONS
36-39	CHARTS & MAPPING
40-45	POWERBOAT, SPORTFISHING & RUNABOUT SYSTEMS
46-47	INTEGRATED VESSEL
48-49	SMARTPHONE INTEGRATION
50-57	PART NUMBERS & PRODUCT DIMENSIONS





# THE INTEGRATED WORLD OF SIMRAD®

Kenna Esplin, 27, Master Captain 200 ton USCG, Florida USA

# INTEGRATED ELECTRONICS SYSTEMS

We live in an integrated world. From our homes, to our cars, to our boats, we're surrounded by technology designed to help us achieve more, with greater ease, and in greater safety. Our integrated vessel concept brings all of your on-board technologies together behind a simple, intuitive interface. Monitor and control every aspect of your on-water experience from a variety of customisable Simrad® multifunction displays.



# GLASS BRIDGE NAVIGATION

## NSOEVO3S™

Build your ultimate navigation system around the NSOEVO3S™.



The NSOEVO3S also gives you 2x faster page changes and smoother transitions\* delivered through the iMX 8 high-performance processor.

Our flagship NSOEVO3S delivers the ultimate view with an ultra-bright display, available in 16, 19, or 24-inch widescreen sizes. Wide viewing angles keep the screen in view from anywhere

in sight, while full HD resolution lets you see more than ever with up to six panels displayed simultaneously in a split-screen layout.

\*When compared to the NSOEvo3™.

## MAIN FEATURES

iMX 8 Integrated six-core processor for superior performance

Ultra-bright, Full HD 16, 19, or 24-inch display

Easy touchscreen control of your entire Simrad® system

1200-nit high-brightness, sunlight-viewable screen

Low-profile glass bridge styling

See more than ever with six-panel split screen option

Connect with smartphones, tablets, and mobile hotspots

Widescreen Full HD monitor support

Integrates with the full range of Simrad® radar solutions, S5100 sonar module, SonarHub with StructureScan® HD imaging, ForwardScan® sonar, and much more

OP50 keypad & rotary controller option

Compatible with C-MAP® Easy Routing™ and Navionics® Dock-to-dock Autorouting™\*

\*Subscription maybe required. Please visit [navionics.com](http://navionics.com) for details.



Pinch to zoom  
with multi-touch.



Simrad® NSOevo3S™ is available in 3 sizes:  
16-inch, 19-inch, and 24-inch





# MULTIFUNCTION DISPLAYS

## NSSEVO3S™

With the iMX8 Processor, the NSSevo3S™ is ready to take on even the toughest tasks and get everything done faster than ever before.



2x

Faster Chart Rendering\*

30%

Faster Boot up Time\*

2x

Faster Page Transitions\*

Fast switching between any split screen combinations,  
smoother transitions for on-screen movements like chart rotation and panning/zooming,  
and faster viewing of high resolution graphics.

\*When compared with Simrad® NSSevo3™. Performance test reflects the approximate performance of NSSevo3S™.



## PERFORMANCE CHARTING

### Better functionality.

With page loading times halved, choice of any split screen combination with views in 3D or Navigation perspective has never been easier.



## HIGH-DEFINITION DISPLAYS

### Better in the sun.

SolarMAX™ IPS displays ensure clear views in any conditions - visible even through polarized sunglasses.

## POWERFUL UI

### Better user experience.

Increased monitoring and control within the existing page - instant Chart orientation changes at the touch of a button, expandable Audio side bar, and a Tide Graph in the instrument bar to monitor tide changes.



Pinch to zoom with multi-touch.



Simrad® NSSevo3S™ is available in 3 sizes: 9-inch, 12-inch, and 16-inch.

## ALL WEATHER SCREENS

### Better control.

SolarMAX™ IPS displays combine all-weather touchscreen and keypad for total control in all conditions.



## EASY APP INTEGRATION

### Better informed.

The Simrad® App provides accessibility - from device registration and manual downloads, to saving waypoints and favourite fishing spots both on - and off - the water.

## ADVANCED IMAGING

### Better fishing.

Built-in high performance sonar with 1kW CHIRP-enabled capable of exceptional bottom-tracking and fish-finding performance. ActiveTarget™, the highest resolution live sonar on the market, SideScan and DownScan Imaging™ boosted by StructureScan 3D, ActiveImaging™ for picture-like views of fish-holding structure, crystal clear views of the bottom ahead using ForwardScan® sonar, or performance sportfishing with the deep water S5100 Sonar.



## MAIN FEATURES

iMX 8 Integrated processor for superior performance

9-inch SolarMAX™ IPS display with ultra-wide viewing angles; viewable through Polarized sunglasses

Switch seamlessly between touchscreen and keypad control

Built in high-performance sonar with 1kW CHIRP

Built-in GPS receiver and wireless connectivity

Control Simrad sonar, radar, autopilot, and other accessories

Industry-standard connectivity to engines, sound system, and more

TripIntel™ trip planning and support for automatic routing

Choose low-profile flush mounting or convenient bracket mounting

Download the Simrad App and connect with smartphones, tablets, and internet hotspots

Includes world basemap

Supports SteadySteer™, an autopilot performance enhancement for NAC™-2 and NAC™-3 autopilot computers fitted with RPU drive pumps

Compatible with a CZone® digital switching device, enabling control from the MFD via the NMEA 2000® network

Mercury® Smart Tow® enabled for wake shaping

ITC Lighting systems can be controlled with an ITC Lighting control bar

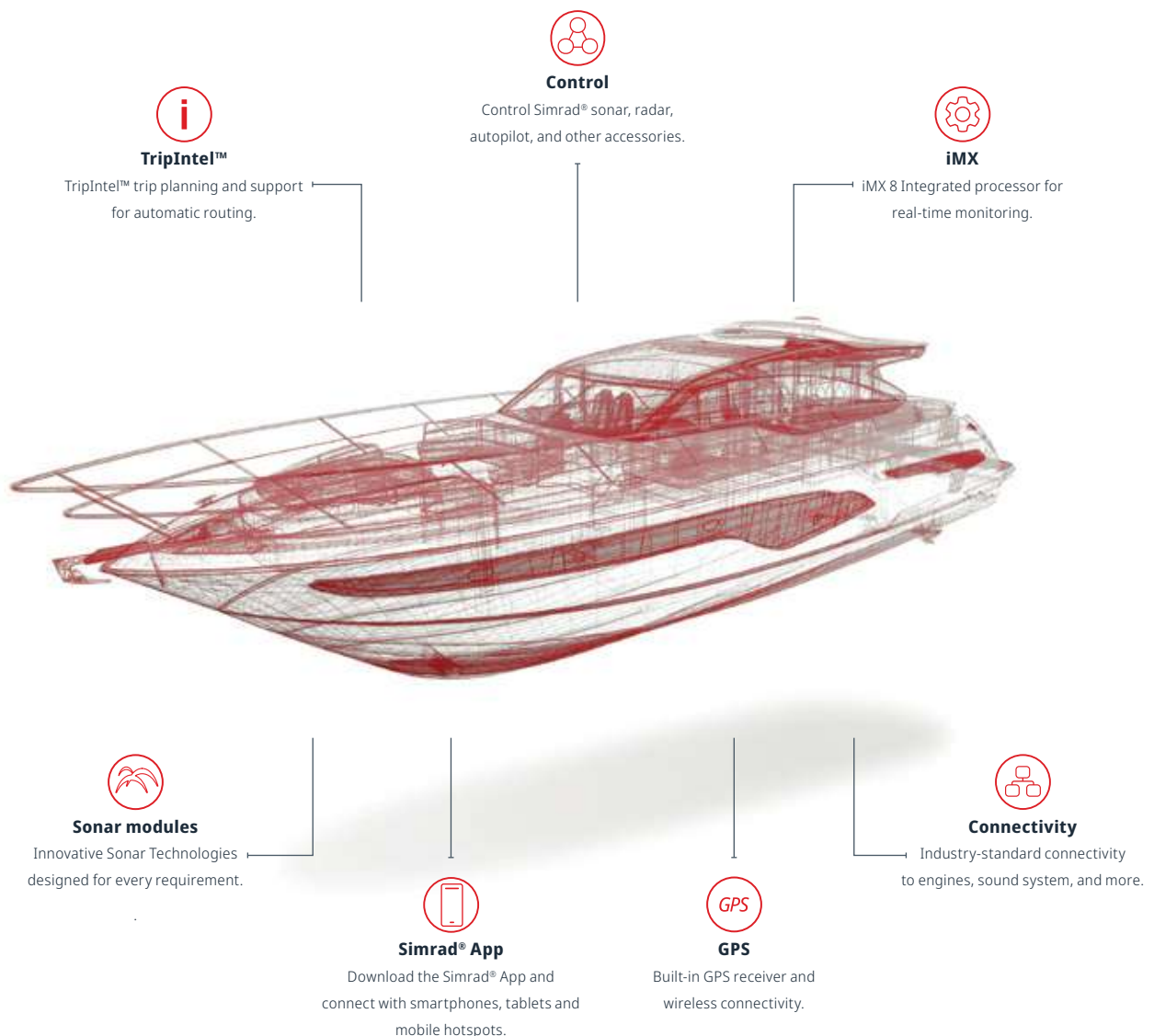
Supports Honda ECO mode engine information

Plan Position Indicator (PPI) and AIS enhanced interface capabilities

## FAST & SIMPLE NETWORKING AND CONNECTIVITY

Industry-standard connectivity to create multi-display systems and link to all on-board electronics, engine and fuel monitoring in real-time, control of on-board sound systems and much more.

Includes system expansion with Simrad® modules and accessories, advanced fish-finding tools such as deep water S5100, Active Imaging™ 3-in-1 or TotalScan™, increased situational awareness with legendary Halo® Pulse Compression radar, and automated control with a fully integrated Simrad® autopilot.



# MULTIFUNCTION DISPLAYS

## INTRODUCING NSX®

The NSX features integrated Sonar, full Radar and Autopilot systems compatibility, and with our handy Setup Wizard tool you'll be up and running in no time.

## Our **newest** chartplotter & fishfinder.



### BRING NAVIGATION TO LIFE

#### Beautiful charts.

See map details in a new way. This includes support for next-generation C-MAP® DISCOVER® X and REVEAL® X marine-optimized charts developed for NSX. C-MAP charts include full-featured Vector Charts with Custom Depth Shading and High Resolution Bathymetry showing accurate contour lines down to a 1-foot level of detail.

### INTUITIVE TOUCHSCREEN EXPERIENCE

#### Simple to use.

Easily access all NSX features via a modern and simple interface, including drag-and-drop screen customisation and enhanced day and night modes. Get crystal clear views of chart detail with the vibrant SolarMAX™ IPS touchscreen - viewable from any angle, in direct sunlight and even through polarised lenses.



## SIMRAD® TECHNOLOGY AT YOUR FINGERTIPS

### Upgrade your experience.

Expand systems with advanced Simrad® technology. Get high resolution images below and to the sides of vessels with Active Imaging™ and CHIRP sonar, SideScan/DownScan Imaging™ and FishReveal™ or search even greater depths with a wide range

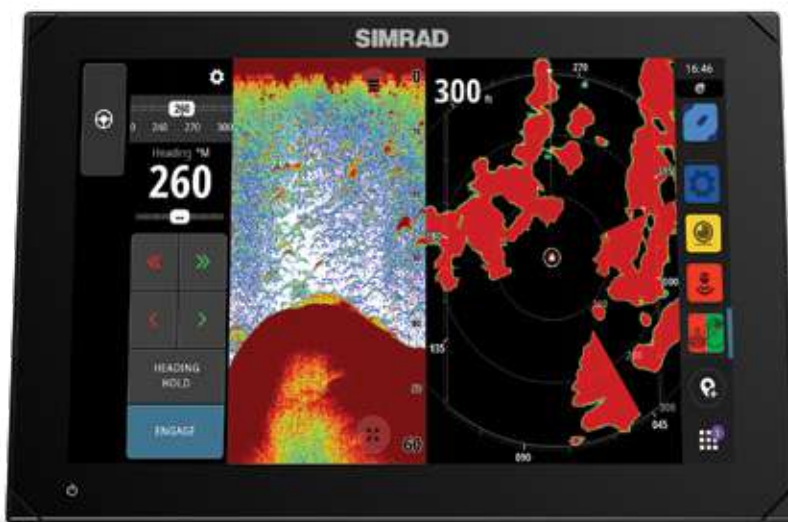
of compatible 1 kW transducers. Identify hazards immediately and see near and far simultaneously with our instant-on, award-winning pulse compression HALO® radars.



Touch screen.



Simrad® NSX™ are available in 3 sizes: 7-inch, 9-inch and 12-inch.



### MAIN FEATURES

Fast and easy switching between applications at the touch of a button.

Accessible via the always visible Activity Bar - no need to go back to the Home screen

Intelligent drag-and-drop screen layout functionality - instantly customise your page layout

Compatibility with C-MAP® DISCOVER® X and C-MAP REVEAL® X charts

Navigate with ease thanks to our fastest ever Autorouting

New vector charts (based on 'tile' technology) provide a modern, easy to use tablet-like experience

All chart settings (including advanced features) are accessible at the touch of a button directly from the chart screen

Waypoints and Route App allows management of all waypoints and routes. Sort by location and filter in different ways (eg. recents, alphabetically etc) and export single or multiple waypoints

Enhanced day and night modes

Integrated 1kW sonar for even more target resolution

Active Imaging™ is perfect for pinpointing fish-holding areas like rocks, reef, weedbeds and wrecks

HALO pulse compression radars give the ultimate situational awareness. Navigate safely in poor visibility, monitor incoming weather and locate feeding birds

NSX can act as an autopilot controller when connected to a Simrad® autopilot system

## EASY-TO-USE SETUP WIZARD

With everything from a Setup Wizard to Simrad® App integration, NSX™ makes life on the water easier than ever before.

The Setup Wizard helps with step-by-step instructions to get up and running quickly, while the Simrad® App offers a whole host of added extras.

These include hassle-free software updates, on and off the water trip planning, a streamlined chart display that looks the same across all platforms, plus easy transfer of all data, including routes and waypoints. Sonar hints offer guidance on what's happening during settings adjustments and sonar device provides you easy-to-understand prompts for each step of the process.



## NEW OPERATING SYSTEM MADE WITH BOATING IN MIND

Our brand new operating system has been redesigned from the ground up, for boaters by boaters. Offering a redefined interface that's faster, simpler and easier to navigate, it boasts new security features and an easy-to-use user interface, ensuring the complexity that has been known in the marine industry is demystified.

It also has full support and connectivity across a range of existing sonar, radar, autopilots, digital switching and more. Developed on Android™<sup>1</sup>, it will allow Simrad® to develop features and functionality in an agile way, which will not only improve consumer experience but also speed up the development process - enabling faster feature development and more frequent releases. It will also offer opportunities for partners and third parties to easily create new applications and experiences for Simrad® and products in the future.



<sup>1</sup> Android is a trademark of Google LLC.



### **Innovative Display sizes.**

Smart industrial design has enabled better screen size solutions. Get more screen for the overall size of your product and more flexibility to arrange your dash layout - multiple screen configurations in a smaller space or larger screens in an existing space.



### **Networking and Connectivity solutions.**

NMEA 2000® compliant and featuring a USB port enabling modem plug-in for additional connectivity to devices. Also features an ethernet port future-proofing NSX™ for full networking in the future.



### **3rd party integration.**

An ever-growing list of partners including Lumishore, Seakeeper, Shadow-Caster®, Omnisense Systems, Smartgyro, and Quick, with built in app integration enabling you to control 3rd party products from the NSX.



### **Simplified Onboarding experience.**

Start-up screen layout and graphics have a modern familiarity about them, while the boat network setup monitor provides full visibility of onboard device status. The Setup Wizard will prompt the user with details of what they still need to do with rich graphic guides on how to do it. This self-help empowerment delivers a major benefit to our end-users and partners alike by reducing the need to call service centres.



# MULTIFUNCTION DISPLAYS

## GO™ SERIES

The Simrad® GO Series, a perfect fit for compact sportboats and dayboats.



The Simrad® GO chartplotter is a perfect way to expand the capabilities of sportboats, cruisers, and smaller centre consoles. Behind a super-bright display with easy to use touch interface lies a chartplotter with built-in GPS receiver and wireless access to the latest charts and updates.

Control your onboard sound system, and choose from an array of built-in sonar technologies: cruise with confidence using ForwardScan™ forward-looking sonar, or find fish like a pro with Broadband Sounder™, CHIRP sonar plus Active Imaging™ Sonar.





## EXPAND YOUR VIEW WITH RADAR

Simrad® GO™ 7 and GO 9 are all full-featured radar displays with plug-and-play connectivity to Simrad® HALO® dome, and HALO open array radar.

Boat confidently through crowded harbours, navigate safely in poor visibility, keep an eye on distant weather cells, and find flocks of feeding birds that hint at good fishing spots. Automatic tuning helps to provide a clear radar picture in any conditions, while radar overlay combines radar data with navigational charts for an easy-to-interpret view of your surroundings.



Pinch to zoom with multi-touch.



Simrad® GO series are available in 2 sizes: 7-inch and 9-inch.



## MAIN FEATURES

Easy to use multi-touch interface

Full-featured chartplotter with the widest available cartography support

Plan smarter with TripIntel™ technology

Support for Navionics® Dock-to-dock Autorouting™\* and C-MAP® Easy Routing™

Flush or bracket mount display

Widescreen with bright LED backlight

High-speed 10 Hz GPS receiver

Built-in Broadband Sounder™, CHIRP sonar, Active Imaging™ or ForwardScan™ sonar support (transducer required)

Built-in wireless connectivity

NMEA 2000® compatible

Radar display for Simrad® HALO® dome, and HALO® open array radar (Excludes GO 5)

Dual microSD card slots (GO 9 only)

\*Subscription might be required. Please visit [navionics.com](http://navionics.com) for details.

# NAVIGATION DISPLAYS

## CRUISE™ RANGE

Simrad® Cruise is the most straight forward chartplotter available.

Everything you need for simple and straightforward GPS navigation is right inside the box – sunlight viewable display with mounting bracket and a sonar transducer. Simrad® Cruise can display charts, navigation and sonar

in split-screen view, or separately in full screen. Rotary dial and keypad controls make navigating through menus, creating routes and accessing temperature, speed, depth readings and battery voltage effortless.

### MAIN FEATURES

Boat confidently with simple menus plus easy-to-use rotary dial and keypad controls

Always know where you are and where you are going with pre-loaded worldwide basemap, plus C-MAP® and Navionics® upgrade options

Track the day's boating activity with Simrad® TripIntel™ technology

Keep important data in view with pre-selected split screens

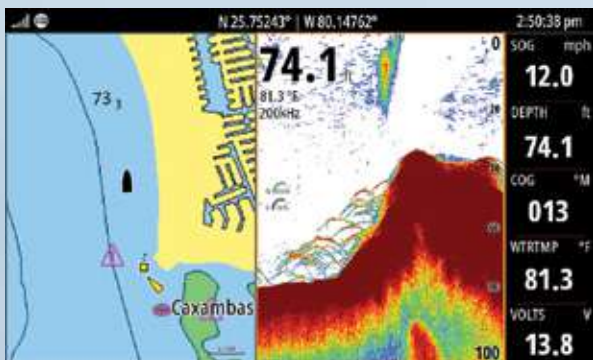
CHIRP sonar with excellent automatic depth tracking

Monitor depth readings, position, battery voltage and other critical boat information



Simrad® Cruise range are available in 3 sizes: 5-inch, 7-inch and 9-inch.

Know where you are and where you are going with Simrad® Cruise™. Choose from a wide range of enhanced charts from C-MAP® or Navionics®, and enjoy **advanced features** like C-MAP® Easy Routing for a true navigation experience.

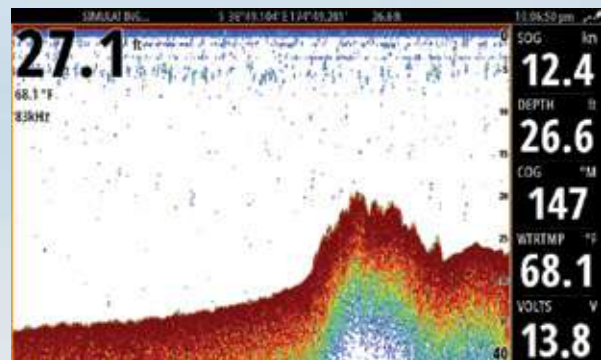


See the details you want the way you want them! Simrad® Cruise offers both full and **split-screen views**, so you can easily display the information you need.

Plotting your course? Select full screen charts for a maximum view of your surroundings.

Simrad® Cruise gives you access to the information you need for a safe and enjoyable time on the water.

Depth readings, position, battery voltage and other critical boat information, can all be monitored on your screen for quick reference and situational awareness.



# HALO® RADAR

## HALO 2000 AND 3000 OPEN ARRAYS

From the people who brought you the world's first recreational Pulse Compression radars, now comes the new HALO 2000 and 3000 series. The powerful open array radars offer superior range, intelligent modes, and class-leading ease of use.



### OUR MOST POWERFUL RADAR YET

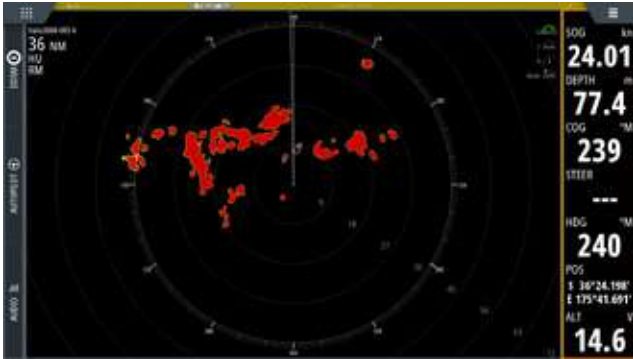
The 2000 and 3000 series really step it up in terms of power, translating to a vastly improved range and best-ever levels of clarity both near and far.

	HALO 2000	HALO 3000
Power Output	50 Watts	130 Watts
Minimum Detection Range	6m	6m
Maximum Range Scale	72NM	96NM
Pre-set modes Harbour, Offshore, Weather, Bird	●	●
Bird+ Mode		●
ZoneTrack™	●	●
Beam Sharpening	●	●
Array Sizes	3ft, 4ft, 6ft	4ft, 6ft
IP Rating	IPX6	IPX6
Startup from Standby	Instant	Instant
Startup from Cold	16-25s	16-25s



## EXPLORE HALO®

Unlike traditional Magnetron radars, HALO's full power is ready when you are. HALO 2000 and 3000 are ready instantly from standby mode, and just mere seconds from a cold start. That's the benefit of solid state, pulse compression technology.



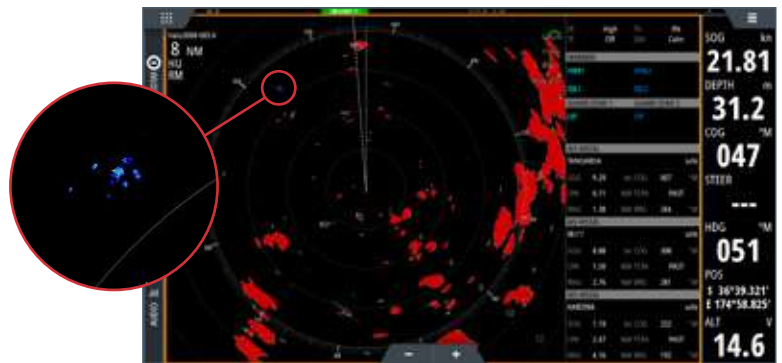
## SEE NEAR & FAR

Like having an extra pair of eyes - enables you to navigate safely through crowded waters or poor visibility.

## NEW BIRD+ MODE\*

For offshore sportfishing enthusiasts and commercial anglers - Easily locate feeding flocks from miles away.

\*Featured on Halo 3000 series.



## TARGET TRACKING

Simultaneous short-, mid- and long-range detection of multiple objects with tracking history.

## VELOCITYTRACK™

Colour-coded targets so you can identify potential threats at a glance. When it comes to safety, situational awareness is everything.



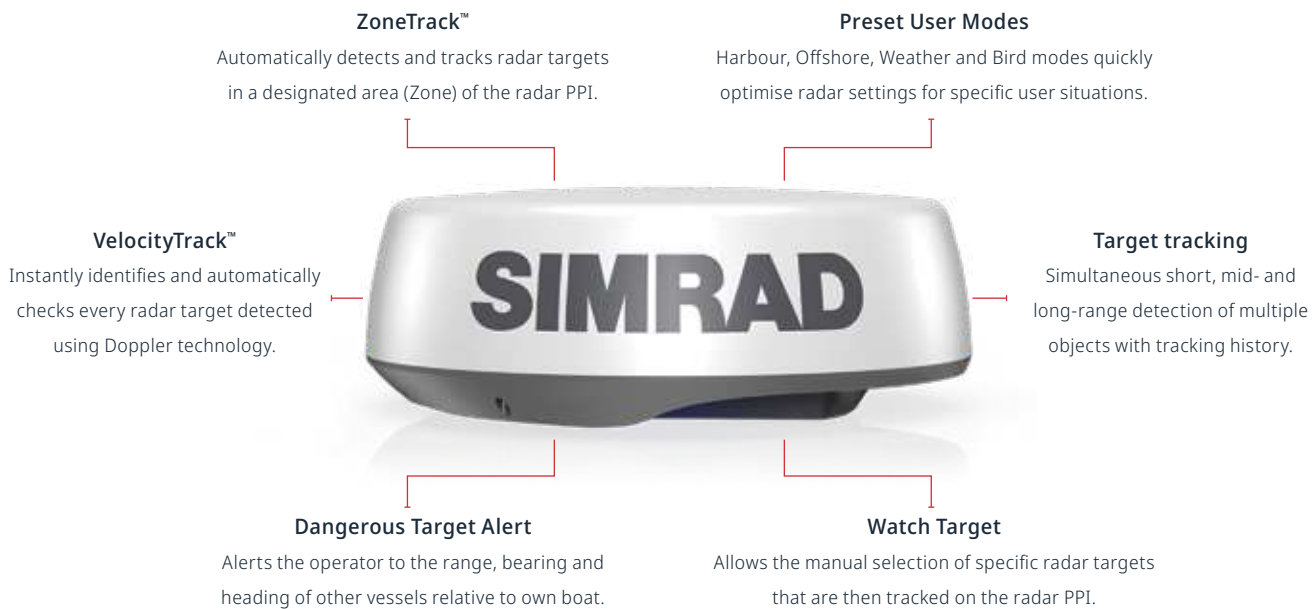
# HALO DOME RADAR

## HALO 24 RADAR

The ultimate view for situational awareness.

Our revolutionary HALO 24 pulse compression dome radars deliver industry-leading 360-degree sweeps every second at close range, for the ultimate in collision avoidance of stationary and fast-moving targets.

With high-quality short, mid and long-range detection, these feature-packed dome antennas ensure targets can be seen vividly - even in the toughest environmental conditions.



## HALO® 24 RADAR SCREENSHOTS



ZoneTrack is an automatic radar target tracking feature that can detect and track radar targets in a designated area (Zone) of the radar PPI. It replaces the former GuardZone feature.

## HALO® 20+ RADAR

HALO 20+ delivers an almost real-time view, with industry-leading 60 RPM operation at close range for the ultimate in collision avoidance.

### MAIN FEATURES

- 36 nm range from a compact 20-inch dome
- Advanced pulse compression technology with beam sharpening
- Simultaneous Dual Range operation sees both near and far
- Ultra-fast 60 RPM operation at ranges up to 1.5 nm
- VelocityTrack™ Doppler technology for collision avoidance
- Easy operation with Harbour, Offshore, Weather and Bird modes
- MARPA target tracking (up to 10 targets, 20 in dual range)
- ZoneTrack™ Automatically detects and tracks radar targets in a designated area (Zone) of the radar PPI
- Watch Target Allows the manual selection of specific radar targets that are then tracked on the radar PPI

Identify hazards in an instant with VelocityTrack™ Doppler technology, and enjoy simultaneous short and long-range coverage—up to 36 nautical miles—from a compact 20-inch dome antenna.



## HALO 20 RADAR

HALO 20 is a cost-effective solution for boaters to increase situational awareness and collision avoidance, detecting collision hazards and other targets nearby and up to 24 nautical miles away. With its small footprint and low profile, HALO 20 is the perfect radar solution for more budget-conscious buyers with smaller sportfishing vessels and dayboats.

HALO 20 radar also delivers a comprehensive range of features to enhance your situational awareness and on-water safety. Boaters can monitor selected collision hazards with MARPA target tracking, tracking up to 10 targets. Whether navigating through crowded waterways or contending with poor visibility, HALO 20 radar cuts through the clutter to give boaters a clear and current picture of their surroundings.



### MAIN FEATURES

- 10W Pulse Compression
- 24 nm range from a compact 20-inch dome
- Unrivaled short range
- Easy operation with Harbour, Offshore and Weather mode
- MARPA target tracking
- InstantOn™
- Low Power Consumption
- Guard Zones

# RADAR DISPLAYS

## R2009 AND R3016

The Simrad® R2009 and R3016 are dedicated radar control units, compatible with a range of Simrad® radar solutions including Halo™ Dome, HALO Open Array and HD Digital Radar.

### R2009 DEDICATED RADAR CONTROL UNIT

The R2009 is a dedicated Radar Control Unit with integrated 9-inch portrait display, compatible with a range of Simrad® radar solutions including Halo Pulse Compression, Broadband 3G™/4G™, and HD Digital Radar.



### R3016 DEDICATED RADAR CONTROL UNIT

The R3016 is a dedicated control unit for Simrad® radar systems and features an integrated 16-inch widescreen display. An ideal safety and navigation accessory for offshore cruisers and sportfishing vessels, the R3016 offers versatile flush or bracket-mount installation options and intuitive keypad-based operation for reliable control in all conditions.



### R2009 AND R3016 MAIN FEATURES

R2009 & R3016 are compatible with Simrad® HALO Pulse Compression, HALO Dome and HD Digital Radar systems

Dedicated radar control unit and Automatic tuning system

Anti-sea-clutter technology for an optimum picture under adverse weather conditions

MARPA target tracking

Keypad and rotary-dial interface with 8 direct-access menu keys

HDMI output for an optional secondary display or remotely-operated 'clone' station (R3016 only)

Bracket and flush-mount installation options

Ethernet, NMEA 0183® & NMEA 2000® connectivity

9-inch portrait display (R2009) or 16-inch HD widescreen display (R3016)





# DEDICATED DISPLAYS

## S2009 AND S2016

The Simrad® S2000-Series fishfinder combines maximum vertical detail and intuitive keypad-driven operation for reliable control in all conditions.



### S2009 DEDICATED SONAR CONTROL UNIT

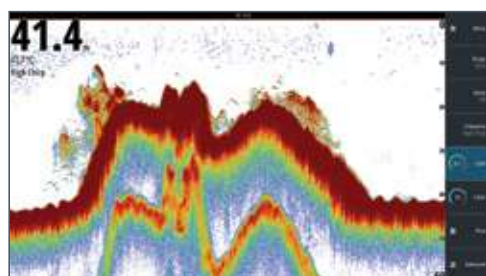
The S2009 fishfinder combines a single-channel 1kW Broadband Sounder™ module with CHIRP technology, 9-inch portrait display for maximum vertical detail, and intuitive keypad-driven operation. Robust yet compact with both bracket and flush-mount installation options, the S2009 was designed to meet the need for a dedicated fish finder display aboard coastal and offshore fishing vessels.

### S2016 DEDICATED SONAR CONTROL UNIT

The S2016 combines 1kW CHIRP-enabled sonar with a 16-inch widescreen display for an extensive on-screen history, and intuitive keypad-driven operation for reliable control in all conditions. This dedicated sonar integrates seamlessly with other Simrad® displays, while offering charter captains and long-range sportfishing vessels the reliability of a self-contained sonar platform.

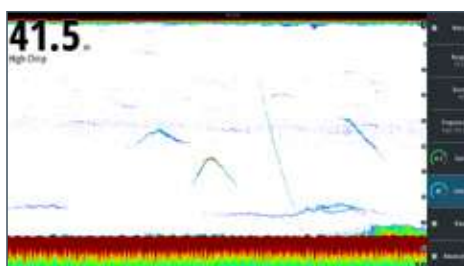


### S2009 AND S2016 SCREENSHOTS



High CHIRP separating the fish from the bottom.

Individual mid water fish. Amazing detection of a jig shown as it drops from 10m to the bottom at 41m.



### S2009 AND S2016 MAIN FEATURES

Dedicated fish finder with integrated Broadband Sounder module and CHIRP 1kW technology

High depth penetration and ping speed

9-inch portrait or 16-inch widescreen display

High brightness ideal for outside installation

See clearly with White Line, White Marker, and Colour Erase features

Simple operation with 8 direct-access menu keys

Bracket and flush mounting options (bracket included) and Ethernet, NMEA 0183® & NMEA 2000® connectivity

# AUTOPILOTS & INSTRUMENTS

## AUTOPILOTS

State-of-the-art electronics are incorporated into Simrad® autopilot systems.

Accurate and reliable control over your heading without years of experience at the helm. There are a number of components that make up an autopilot system, but if you approach it in the right order, it's straight forward. A lot of the choices are made for you based on the type of steering system you have on your boat.

Start by understanding what type of steering you have, then work through the drive selection process, this will in turn select the right computer for you and help you understand if you need a rudder feedback unit, then you can select the controller and any additional accessories you may need.

## BUILD YOUR AUTOPILOT SYSTEM



Pilot Computers		Simrad® Pilot Heads				Simrad® Remotes			Simrad® Pilot MFD's											Remotes	
		AP24	AP28	AP44	AP48	OP10	OP12	QS80, FU80, NFU80	NSE	NSS	NSO	GO Series	NSS evo2	NSS evo3	NSS evo3S	NSO evo2	NSO evo3	NSO evo3S	NSX	WR10	
	AC12	✓	✓	✓	✓	✓	✓	✓	✓	✓	✓	✓	✓	✓	✓	✓	✓	✓	✗	✓	
	AC42	✓	✓	✓	✓	✓	✓	✓	✓	✓	✓	✓	✓	✓	✓	✓	✓	✓	✗	✓	
	NAC-1	✗	✗	✗	✗	✗	✗	✗	✗	✗	✗	✓	✓	✓	✓	✓	✓	✓	✓	✓	
	NAC-2	✗	✗	✓	✓	✗	✓	✓	✗	✗	✗	✓	✓	✓	✓	✓	✓	✓	✓	✓	
	NAC-3	✗	✗	✓	✓	✗	✓	✓	✗	✗	✗	✓	✓	✓	✓	✓	✓	✓	✓	✓	
	NAC -D	✗	✗	✓	✓	✗	✓	✓	✗	✗	✗	✓	✓	✓	✓	✓	✓	✓	✓	✓	
	SG05	✓	✓	✓	✓	✗	✓	✓	✓	✓	✓	✓	✓	✓	✓	✓	✓	✓	✗	✓	

# AUTOPILOTS & INSTRUMENTS

## AUTOPILOTS

An autopilot computer is the brains of your Simrad® autopilot system.

### STEADYSTEER™

SteadySteer is a new upgrade for autopilot systems that enables immediate, manual control of a vessel through turns without disengaging the autopilot.

#### STEADYSTEER MAIN FEATURES

---

Seamless and intuitive boat control

---

Easy course changes direct from the helm

---

Simple operation with automatic override and re-engagement

---

Performance upgrade for existing systems\*



### NAC-D

NAC -D, a steer-by-wire autopilot solution for Electronic Vessel Control Systems (steering systems with a digital interface). NAC -D also comes with Continuum® steering and the new SteadySteer feature.

#### NAC™ -D MAIN FEATURES

---

SeaStar Solutions®, Volvo®, Yanmar® and Yamaha® approved control system interface

---

Control via AP™44, AP48 or easily integrate with your Simrad® multifunction display

---

No need for an additional hydraulic pump, rudder sensor, or dockside calibration

---

SteadySteer™ feature included

---

Continuum® steering included - an autopilot algorithm technology based on decades of development

---

Full system integration with Simrad® navigation systems via NSS™ and NSO™ multifunction display ranges

\* Refer to [www.simrad-yachting.com](http://www.simrad-yachting.com) for details on compatibility

# AUTOPILOTS & INSTRUMENTS

## AUTOPILOTS

Accurate and reliable control over your heading without years of experience at the helm.

### AP™ 44 AUTOPILOT

This feature-packed autopilot controller with 4.1-inch full-colour display, intuitive operation and rotary-dial course adjustment.

#### AP44 MAIN FEATURES

- Optically bonded display with wide viewing angle
- Intuitive autopilot control with simple menu
- Quick and easy rotary-dial course adjustment
- Automated turn patterns for hands-free manoeuvres
- No Drift steering holds your course against wind and tide



### AP48 AUTOPILOT

The AP48 Autopilot Controller is a premium dedicated control head for Simrad® autopilot systems, enhanced with modern glass bridge styling.

### PRECISION HYDRAULIC AUTOPILOT / OUTBOARD PILOT

Do-It-Yourself autopilot packs for fingertip control from any Simrad® GO™ Series, NSSevo3™, NSSevo3S™, NSO™evo2, NSO™evo3 or NSOevo3S™ multifunction display. Affordable automatic steering for hydraulic-steer and cable steer engines. The Precision Hydraulic Autopilot provides robust performance in heavier seas with included rate compass.



#### AP48 MAIN FEATURES

- Intuitive autopilot interface with extended keypad
- Large, heavy-duty rotary control dial for precision steering
- Continuum steering technology
- Optically bonded 4.1-inch colour display
- Ultra wide 170-degree viewing angle

Precision Hydraulic Autopilot

Outboard Pilot





# AUTOPILOTS & INSTRUMENTS

## INSTRUMENTS

From remote controls for your MFD to multi-purpose instrument displays.



### IS35

Easily visible day or night, the IS35 offers an interface to engine data, fuel efficiency, depth history and more. Connected by NMEA 2000®, the IS35 automatically detects and displays the most relevant information on a series of pre-set, customisable data pages.

Simple button-driven menus

Automatically displays data from NMEA 2000® engines and sensors

Monitor up to two engines per gauge

Stylish-low-profile design

Single-cable installation



### IS42 / IS42J

The multi-purpose IS42 instrument display uses a 4.1-inch full-colour screen to clearly present data from a wide variety of NMEA 2000® connected sensors and engines. The IS42J offers engine status and performance for up to two J1939 diesel engines.

Optically bonded display with wide viewing angle and low-profile glass bridge design

Display wind, speed, depth, engine data, AIS and more

Intuitive operation with waterproof silicon keys

Add an OP12 keypad for full Simrad® autopilot control



### OP12

The OP12 wired remote seamlessly integrates with Simrad® autopilot systems to provide intuitive mode control, course adjustments, and power steering. Pairs with the IS42, and compatible with Simrad® multifunction displays.

Full autopilot control with the IS42

Waterproof silicon keys

Easy one-cable installation



### PRECISION-9

Based on reliable solid-state sensor technology, the Precision-9 Compass supplies heading and rate-of-turn information to Simrad® autopilot, radar and navigation systems.

Continual automatic calibration

Heading, Rate Of Turn (ROT), pitch and roll output over NMEA 2000®

Easily adjustable mounting bracket allows bulkhead or up-mast installation



### WR10

Take control of your autopilot from anywhere on board with this easy to use, pocket size, wireless remote controller. The WR10 works with Simrad® autopilot systems and is a perfect add on for all types of motor and fishing boats.

1 or 10 degree course changes

Waterproof Bluetooth® base station

Range of up to 30 metres



### OP50

Available in portrait and landscape versions to suit any mounting location from dash to helm chair arm, this controller provides intuitive keypad and rotary-dial command of up to six displays.

Compatible with compatible with GO™, NSS™ and NSO™ multifunction displays range

High-quality aluminium control dial with built-in cursor functions

Available in portrait or landscape orientation

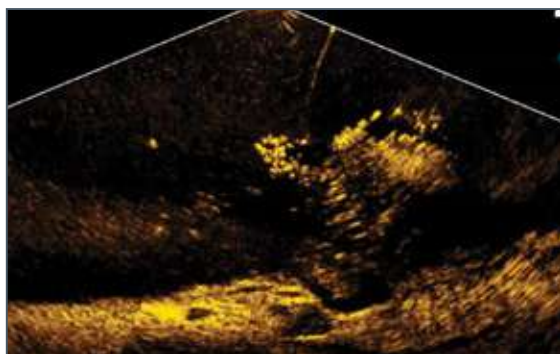
# SONAR & TRANSDUCERS

## TRANSDUCERS AND MODULES

From ActiveTarget® to Active Imaging™ technology, we offer something for every angler, on any budget.

### ACTIVETARGET LIVE SONAR

See high-resolution images of fish swimming around structure and responding to your lure, as it happens, with new ActiveTarget Live Sonar. Featuring Forward, Down or Scout views, you can scan fish locations around your boat and easily track their movements. See how fish relate to structure and react, so you can make the right adjustments to make them strike.



See fish move through the water and around structure in real time.

### ACTIVETARGET MAIN FEATURES

Leave little to chance and see around and beneath your boat with Forward, Down and Scout views

See structure and fish that are in front of your transducer, so you can perfectly target your next cast

Know the depth and see live what is directly below your transducer so you can drop your lure right on the fish

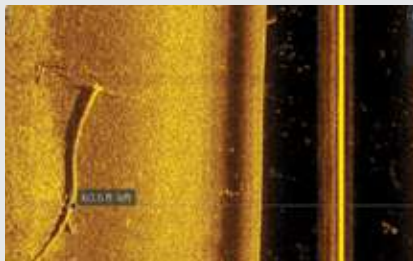
See a live wide-view in front of your transducer to quickly see what is around and which direction you should be casting

### ACTIVE IMAGING SONAR

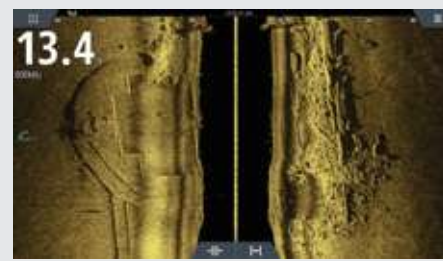
Perfect for pinpointing fish-holding areas like rocks, reef, weedbeds and wrecks. Active Imaging sonar delivers superior clarity and the highest resolution images of fish and structure at a longer range than any other structure imaging technology.



Our clearest, sharpest sonar image ever without sacrificing any range.



Quickly identify fish-holding structure like rocks, reef, weedbeds and wrecks.

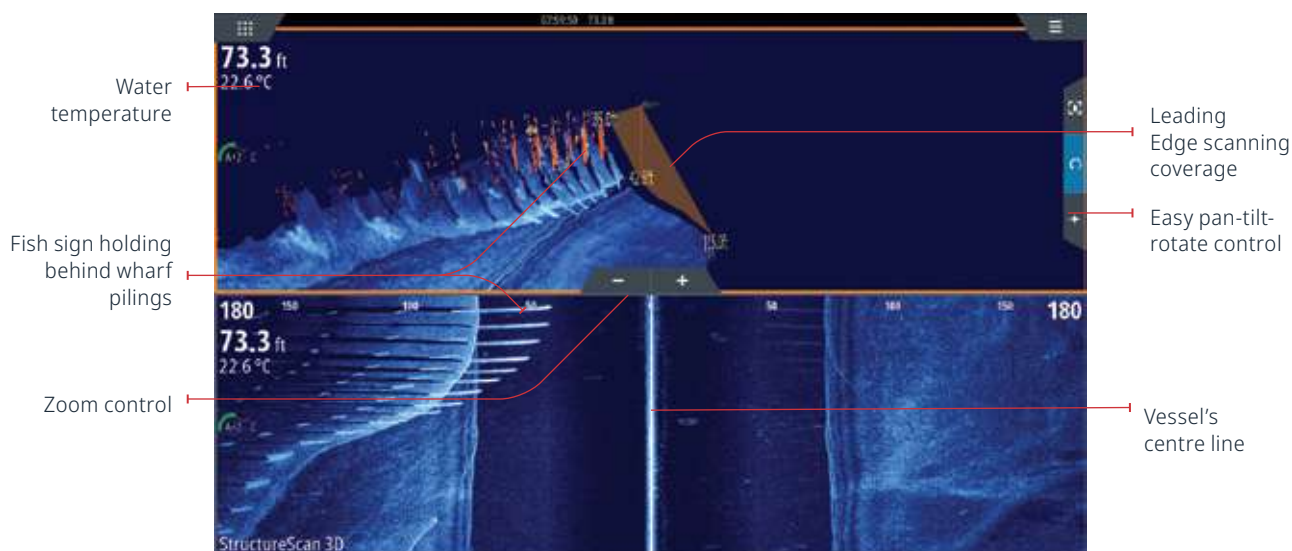


Active Imaging doesn't sacrifice range for image clarity, allowing you to find the structure faster.

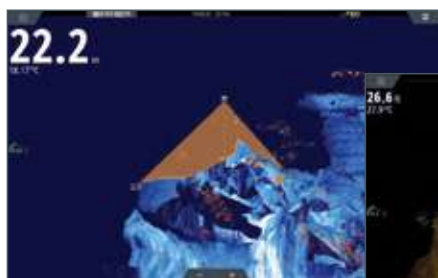
# SONAR & TRANSDUCERS

## STRUCTURESCAN® 3D

StructureScan 3D imaging scans underwater terrain and fish-holding structure to create a high-resolution, 180-degree, three-dimensional view beneath your vessel.



StructureScan 3D ScanTrack highlights wharf pilings as fish-holding structure



StructureScan 3D showing fish-holding around rocky structure near Nelson, New Zealand. Use Vertical Enhancement to make smaller structure appear larger and more visible.



StructureScan 3D's ScanTrack view showing two distinct fish groups of varying species or size holding at different depth contours against this drop off.

### MAIN FEATURES

- Unrivaled SideScan image clarity
- High Definition (HD) and super-wide 3D scanning
- Leading Edge™ Scanning Reference
- SelectScan™ target identification
- Vertical Enhancement Control and Waypoint Overlay
- ScanTrack™ pan-tilt-rotate controls
- Enhanced SideScan Skimmer® transducer design



## STRUCTURESCAN 3D

With this unique imaging view, anglers gain a better understanding of where fish and structure are located in relation to their vessel. StructureScan 3D imaging is available on Simrad® NSS™ and NSO™ product families when used in combination with the StructureScan® 3D module and 3D Skimmer® transducer.

# SONAR & TRANSDUCERS

## S5100 SONAR MODULE

Whether searching deep for swordfish, mid-range bait balls or wrecks holding big targets, the Simrad® S5100 Sounder upgrades your fish-finding ability.



This high-performance CHIRP sonar module features three fully independent channels to deliver simultaneous high-resolution coverage across multiple depth ranges, perfect for offshore sportfishing anglers.

Mix and match wide and narrow transducer beam-widths to reveal more fish, or adjust CHIRP frequencies to precisely target specific depths producing big, crisp arches for the most advanced target separation available.

### MAIN FEATURES

Three fully independent sonar channels deliver high-resolution coverage

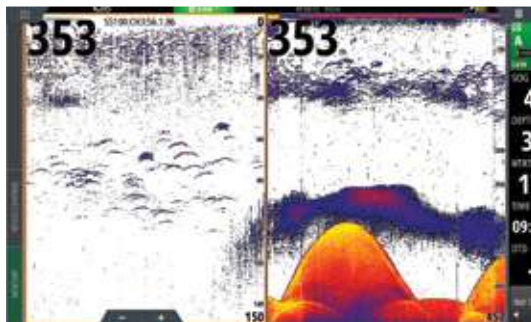
Noise-free clarity at all depth ranges

Dependable bottom-lock at faster boat speeds

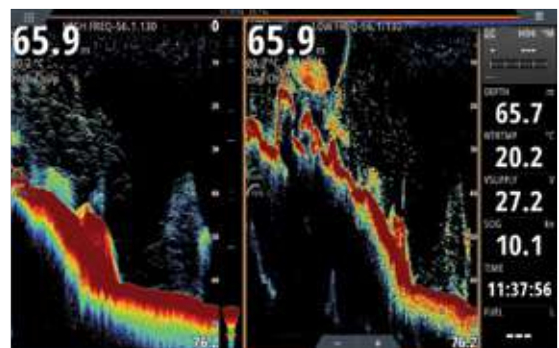
Flexible and easy transducer frequency selection to match your needs

Intelligently cover the water column in superior detail

3KW per channel to get even deeper



Pinnacles from 420m (1377ft) up to 300m (984 ft) on low frequency. Large bait school and individual fish in the mid water on both frequencies.



Reef Fishing at 65M (210ft). Different ping speed between high and low chirp.



# SONAR & TRANSDUCERS

## CHIRP AND BROADBAND TRANSDUCERS

For compatibility please see [www.simrad-yachting.com](http://www.simrad-yachting.com) or speak to one of our certified dealers.

Transom Mount	Tilt °	Freq (kHz)	Power	Cone angle °	Connector	Part Number
Active Imaging™ 3-IN-1		83/200/M/H		52°/22°	9pin xSonic	000-14489-001
HDI SKIMMER		83/200/M/H		52°/22°	9pin xSonic	000-12728-001
HDI SKIMMER		50/200/L/H		29°/12°	9pin xSonic	000-12569-001
TM150M		M (95-155)	300W	17°-26°	9pin xSonic	000-13944-001
P66		50/200	600W	45°/11°	9pin xSonic	000-13919-001
TM165HW		Hi (150-250 KHZ)	600W	30°	9pin xSonic	000-15482-001
TM185HW		Hi (150-250)	1kW	25°	9pin xSonic	000-13997-001
TM185M		M (85-135)	1kW	16°-11°	9pin xSonic	000-13998-001
TM260		50/200	1kW	19°/6°	9pin xSonic	000-13904-001
*TM275LH-W		L (42-65)/H(150-250)	1kW	16°-25°/25°	9pin xSonic	000-13770-001
Through hull	Tilt °	Freq (kHz)	Power	Cone angle °	Connector	Part Number
Bronze HDI	0°	50/200/L/H		45°/11°	9pin xSonic	000-13905-001
	12°	50/200/L/H		45°/11°	9pin xSonic	000-13906-001
	20°	50/200/L/H		45°/11°	9pin xSonic	000-13907-001
B150M - 20°	20° (0° & 12° available)	M (95-155)	300W	17°-26°	9pin xSonic	000-13922-001
P319	0°	50/200	600W	45°/12°	9pin xSonic	000-13915-001
SS60 - 20°	20° (0° & 12° available)	50/200	600W	45°/12°	9pin xSonic	000-13786-001
SS75M - 20°	20° (0° & 12° available)	M (80-130)	600W	16°-24°	9pin xSonic	000-13910-001
SS75H	0°	H (130-210)	600W	9°-15°	9pin xSonic	000-13911-001
	12°	H (130-210)	600W	9°-15°	9pin xSonic	000-13912-001
	20°	H (130-210)	600W	9°-15°	9pin xSonic	000-13913-001
SS260		50/200	1kW	19°/6°	9pin xSonic	000-13783-001
SS164 - 20°	20° (0° & 12° available)	50/200	1kW	20°/6°	9pin xSonic	000-13918-001
SS175L	0°	L (40-60)	1kW	21°-32°	9pin xSonic	000-13774-001
	12°	L (40-60)	1kW	21°-32°	9pin xSonic	000-13775-001
	20°	L (40-60)	1kW	21°-32°	9pin xSonic	000-13776-001
SS175M	0°	M (85-135)	1kW	11°-16°	9pin xSonic	000-13777-001
	12°	M (85-135)	1kW	11°-16°	9pin xSonic	000-13778-001
	20°	M (85-135)	1kW	11°-16°	9pin xSonic	000-13779-001
SS175H-W	0°	H (150-250)	1kW	25°	9pin xSonic	000-13780-001
	12°	H (150-250)	1kW	25°	9pin xSonic	000-13781-001
SS164 - 20°	20°	H (150-250)	1kW	25°	9pin xSonic	000-13782-001
*B275LH-W		L (42-65)/H(150-250)	1kW	16°-25°/25°	9pin xSonic	000-13771-001
*R509LH-W		LL (28-60)/H(150-250)	3kW	9°-23°/25°	9pin xSonic	000-13773-001
In Hull/Pocket/ Chest Mount	Tilt °	Freq (kHz)	Power	Cone angle °	Connector	Part Number
P79		50/200	600W	45°/12°	9pin xSonic	000-13942-001
M260		50/200	1kW	19°/6°	9pin xSonic	000-13914-001
*CM275LH-W		L (42-65)/H(150-250)	1kW	16°-25°/25°	9pin xSonic	000-13772-001
Adaptors						Part Number
7 pin TXD plug to 9 pin MFD plug	For connecting 7 pin blue plug transducers to 9pin xSonic display					000-13313-001
9 pin TXD plug to 7 pin MFD plug	For connecting non Airmar XID transducers with 9pin xSonic connectors with analogue temp to older 7pin blue sockets on displays and sonar modules					000-12571-001
9 pin TXD plug to 7 pin MFD plug	For connecting XID Airmar Chirp transducer to older 7 pin blue socket on displays and sonar modules					000-13977-001

\* These are dual channel transducers, connect to S5100, NSSevo3™ or NSSevo3S™.

# SONAR & TRANSDUCERS

## FORWARDSCAN™ SONAR

Know what lies ahead with Simrad® ForwardScan™.

This forward-looking sonar provides a clear two-dimensional image of the bottom in front of your vessel, allowing you to navigate shallow or poorly-charted waters with confidence. With real-time updates and a forward-looking view of up to eight times your current depth, ForwardScan™ lets you relax and enjoy a safer day on the water.

### MAIN FEATURES

Clear view of what's below the surface

Bottom colour tracking for simplified bottom view

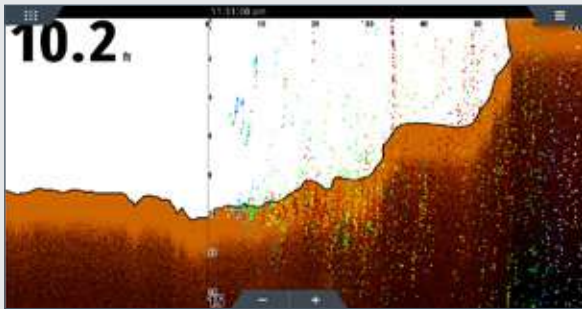
Set up custom warning zones

Avoid running aground and with shallow depth alarm

Built-in temperature sensor

Easy to install through-hull fitting with stainless sleeve

Simrad® NSS™ and NSO™ product families (via SonarHub) GO™ 7/ GO 9 compatible

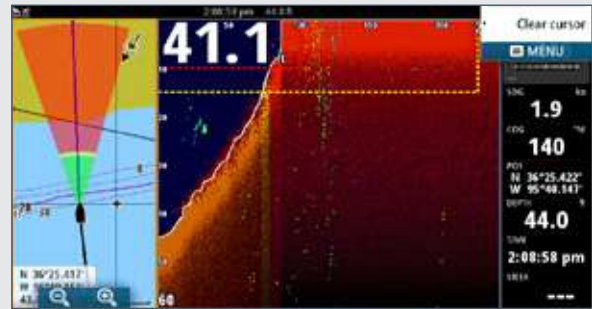


Bottom Colour Tracking offers a solid 2D rendering of the bottom ahead of your vessel for an uncluttered, immediately understandable view.

8x

**MAXIMUM FORWARD VIEW  
OF 8X YOUR CURRENT DEPTH**

e.g. at 3m (10ft) depth, see up to 24m.



Heading Line View integrates ForwardScan depth data with the heading line on the navigation page of your Simrad® display, with simple colour-coding to represent deep, medium and shallow water.

4x

**NOMINAL FORWARD VIEW  
OF 4-5X YOUR CURRENT DEPTH**

e.g. at 3m (10ft) depth, see 12-15m  
(40-50ft) ahead.





# MARINE COMMUNICATIONS

## RADIO / AIS

Hear and be heard with the latest equipment from Simrad®.



### RS20S

Stay safe and in touch with this dependable Class D DSC approved VHF radio featuring an integrated GPS receiver.

High-visibility display with inverted night mode

Intuitive rotary dial and keypad controls

Four-button fist microphone

Class D DSC approved

Integrated GPS antenna



### RS40

Stay safe and connected with this VHF marine radio featuring a sleek design with removable fist mic, Class D DSC functionality, and built-in GPS.

Class D DSC approved VHF radio

Dual channel AIS receiver

Integrated GPS receiver

Connect up to two wireless handsets



### RS40-B

The RS40-B includes a Class B AIS transceiver, which not only receives AIS targets but also transmits your boat's position to nearby AIS-equipped vessels.

Integrated Class B AIS transceiver

Class D DSC approved VHF radio

Integrated GPS receiver

Removable fist mic supports front or rear connection

Connect up to two wireless handsets

NMEA 0183® and NMEA 2000® connectivity



### V3100

V3100 offers the next level in AIS performance. This Class B-SO AIS transceiver transmits at 2.5x the power of a regular Class B AIS. The time between transmissions also changes depending on your boat speed.

Class B-SO approved AIS transceiver

5W transmit power

NMEA 2000, 0183 connectivity

IPx7 waterproof



### NAIS-500

Reduce your risk of collision with this fully integrated Class-B AIS transceiver – essential for navigating busy shipping lanes and congested ports. The NAIS-500 networks easily with any NSS™, NSO™ or GO™ display.

Class-B Approved AIS Transponder

Integrates with existing Simrad® MFD

NMEA 2000, 0183 connectivity

IPX7 waterproof & low power consumption



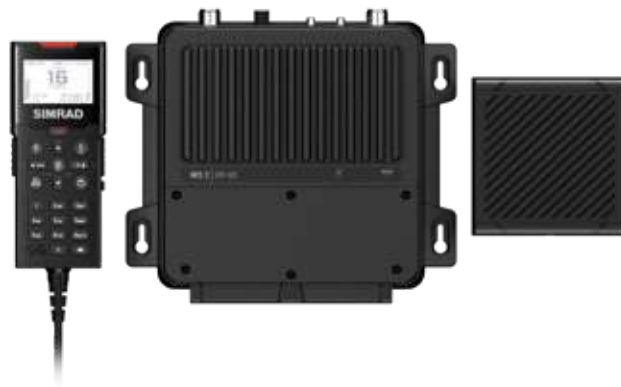
# MARINE COMMUNICATIONS

## RADIO / AIS

Hear and be heard with the latest equipment from Simrad®.

### RS100/RS100-B

Not just a radio, the RS100 also functions as a hailer, foghorn, and on-board intercom. Connect up to 4 wired handsets and 4 wireless handsets for access anywhere on board. The RS100-B includes all the features of the RS100 but with the addition of a Class B AIS transceiver.



#### MAIN FEATURES

Modular system with up to 4 wired and 4 wireless handsets

60 seconds record and replay

Class B AIS transmitter and receiver (RS100-B only)

Optional wireless handsets with inductive charging

The RS100-B requires dedicated GPS receiver (GPS-500) for AIS

Vessel wide intercom system to all handsets and speakers

Track buddy – a feature that automatically requests the position of another VHF radio.  
- Track up to 5 other radios.

Seamless integration with a wider Simrad® system through NMEA 2000® and 0183®

Large bright handset screens with intuitive user interface

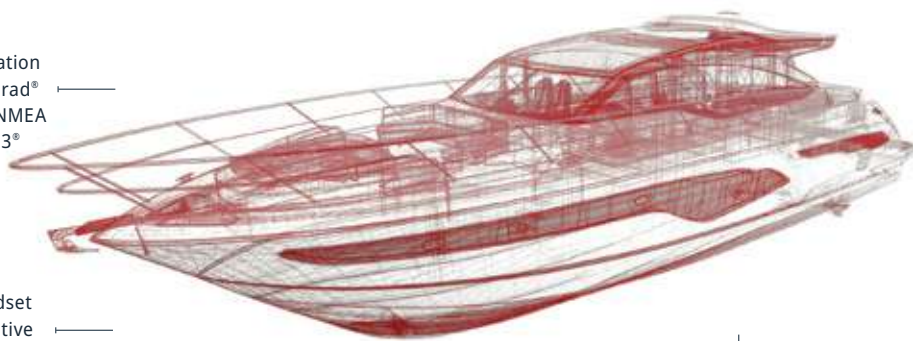
Improved design to align with style of Simrad® MFD's

Configurable with up to four external speakers

Integrated Class-B AIS transmitter and Receiver on RS100-B only

Connectivity with up to four Wireless Handsets

Capable of adding up to four Wired Handsets



# CHARTS & MAPPING

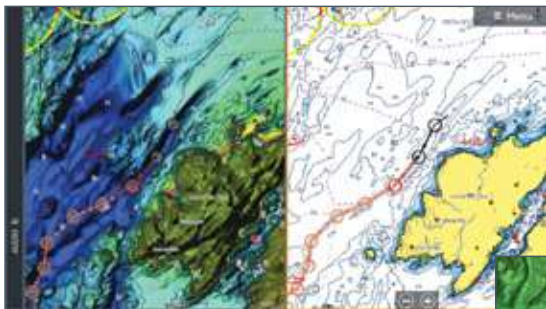


## CARTOGRAPHY

Offering the widest range of cartography options for anglers and cruisers.

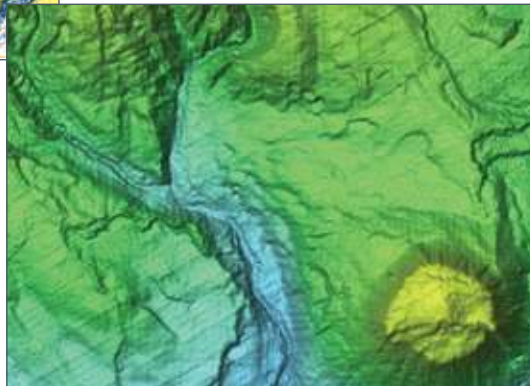
### C-MAP®

C-MAP has been setting the standard for navigation and situational awareness, serving boaters worldwide, since 1985. A C-MAP chart is the perfect companion for your Simrad® Chartplotter.



### C-MAP REVEAL®

The all-new C-MAP REVEAL charts will open up a new world of mapping. View the seafloor in a whole new light and clearly identify seafloor structure, along with reefs and ledges to find the best fishing and diving spots. Maximise every moment on the water.



#### MAIN FEATURES

Shaded Relief, including Ultra-High Resolution Bathymetric Imagery

Navigation Data – contains all features of C-MAP DISCOVER, with Dynamic Raster Charts, Aerial Imagery and Satellite Overlay

### C-MAP DISCOVER®

With a choice of coverage areas, C-MAP DISCOVER charts include all of the core features you need – full-featured Vector Charts, Custom Depth Shading, Tides & Currents and Easy Routing. Includes the very best of C-MAP HRB.

#### MAIN FEATURES

Full Featured Vector Charts – accurate, up-to-date vector chart detail, derived from official Hydrographic Office information

High-Resolution Bathymetry\* – HRB layer helps you identify shallow areas, drop-offs and ledges. Now includes Genesis® detail as part of a single HRB layer.



\* Level of detail is not available everywhere.



# CHARTS & MAPPING

## CARTOGRAPHY

Offering the widest range of cartography options for anglers and cruisers.

### C-MAP® GENESIS®

C-MAP Genesis charts have revolutionized freshwater fishing, and also offers huge advantages to saltwater anglers, empowering you to create high-definition custom fishing maps with amazing detail and one-foot contours that uncover key fish-holding areas. Find out more at [genesismaps.com](http://genesismaps.com).



#### MAIN FEATURES

Transform your sonar logs in free custom maps

View, download & contribute to a global social map of thousands of water bodies, created by thousands of Genesis community users

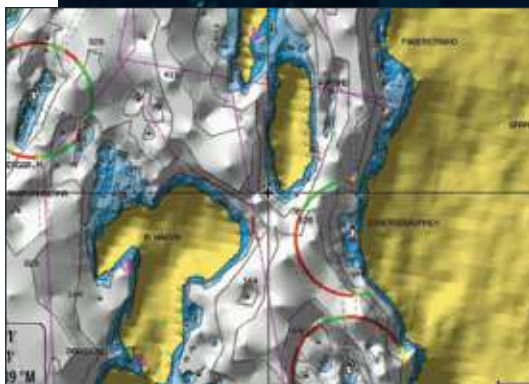
Customise maps with 1-, 3-, 5- or 10-foot shaded contours

Option to upgrade to Genesis Edge to keep your maps private

To learn more about the C-MAP range, and find the perfect chart for you, visit the website and online store at [www.c-map.com](http://www.c-map.com)

### NAVIONICS®

Navionics charts offer optional high-definition layers, including 3D, Satellite Overlay, Panoramic Port Pictures, Dynamic Tides & Current, SonarChart™ Live and much more.



### NAVIONICS PLATINUM+

All the same marine and lakes content and advanced features found in Navionics+ are augmented with 3D View, satellite overlay and panoramic photos to provide the ultimate situational awareness.



Copyright Acknowledgement: <https://www.c-map.com/legal/copyright-acknowledgement/>  
Notices and Warnings: <https://www.c-map.com/legal/notices-and-warnings/>

# CHARTS & MAPPING

## CARTOGRAPHY

Exclusively for Simrad® NSX™.

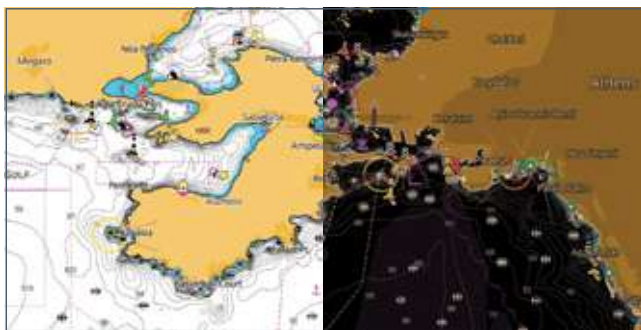
### C-MAP® DISCOVER® X

C-MAP DISCOVER X offers a fresh, dynamic experience. With the latest vector data, best-in-class Day and Night modes and the most detailed C-MAP High-Res Bathymetry, with an all-new Map Inspector Tool. DISCOVER X also delivers smooth integration with the Simrad® Companion App. Rich features include Custom Depth Shading, Tides & Currents, and subscription-free Autorouting plus 12 months free online updates.

The **new,**  
future format for  
C-MAP charts.

### MAIN FEATURES

Smooth App Integration
New Map Inspector Tool
Full-Featured Vector Charts
High-Resolution Bathymetry
Custom Depth Shading
Best-in-Class Day & Night Modes
Tides & Currents
Detailed Marina & Port Plans
Harbor & Approach Details
Subscription-Free Autorouting
12 Months Free, Easy Chart Updates
Connected Experience – Future-Proof



### NEXT GENERATION CHARTS

A fresh, dynamic chart experience, making navigation clearer than ever before. Optimised data and new chart presentation to give you the best on-the-water navigation experience. Always see the data you need without clutter, optimised at every zoom level Best-in-class Day & Night modes. Stay safe and navigate with ease, whatever the weather, whatever the time of day.

### SMOOTH APP INTEGRATION

Link to the Simrad® Companion App – enjoy the same charts and a fully connected experience. Plan trips, review tracks and plot waypoints on the App, then sync straight to your NSX. Access NSX manuals, “How To” guides and much more, directly from the App The future is connected; with C-MAP & Simrad®, you’ll be ready.





# CHARTS & MAPPING

## CARTOGRAPHY

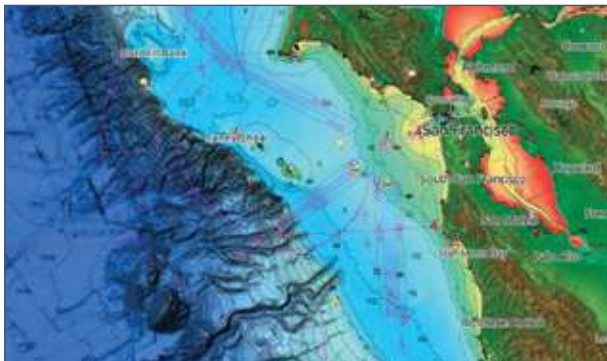
Exclusively for Simrad® NSX™.

### C-MAP® REVEAL® X

C-MAP REVEAL X offers a fresh, dynamic experience. All the great features from DISCOVER X, including all-new Map Inspector Tool, and more – bring the world around you to life with Shaded Relief and feel connected to your surroundings with Satellite Overlay. REVEAL X charts also deliver smooth integration with the Simrad® Companion App and come with 12 months free online updates.

### NEW MAP INSPECTOR TOOL

Quickly access the information you need, with a simple touch of the screen. Tides & Currents – detailed projections of water level and tidal data to help you plan your day out. Detailed Marina Port Plans – docking in an unfamiliar port is no problem when you have precise layouts of thousands of marinas, including slip spaces, restricted areas, and other vital information.



### SATELLITE IMAGERY

Feel better connected to your surroundings when you find yourself in an unfamiliar place.



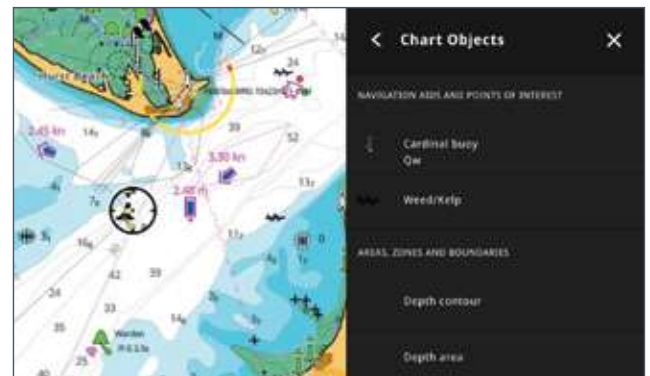
See chart detail for DISCOVER X and REVEAL X on Chart Explorer - and check out Night Mode

### PREMIUM FEATURES

Everything in MAIN FEATURES plus:

Shaded Relief REVEAL Layer

Satellite Imagery



### SHADED RELIEF

Bring the world around you to life with 3D rendered land and underwater elevation, including areas of ultra-high resolution – a game-changer for anglers and divers, restricted areas, and other vital information.



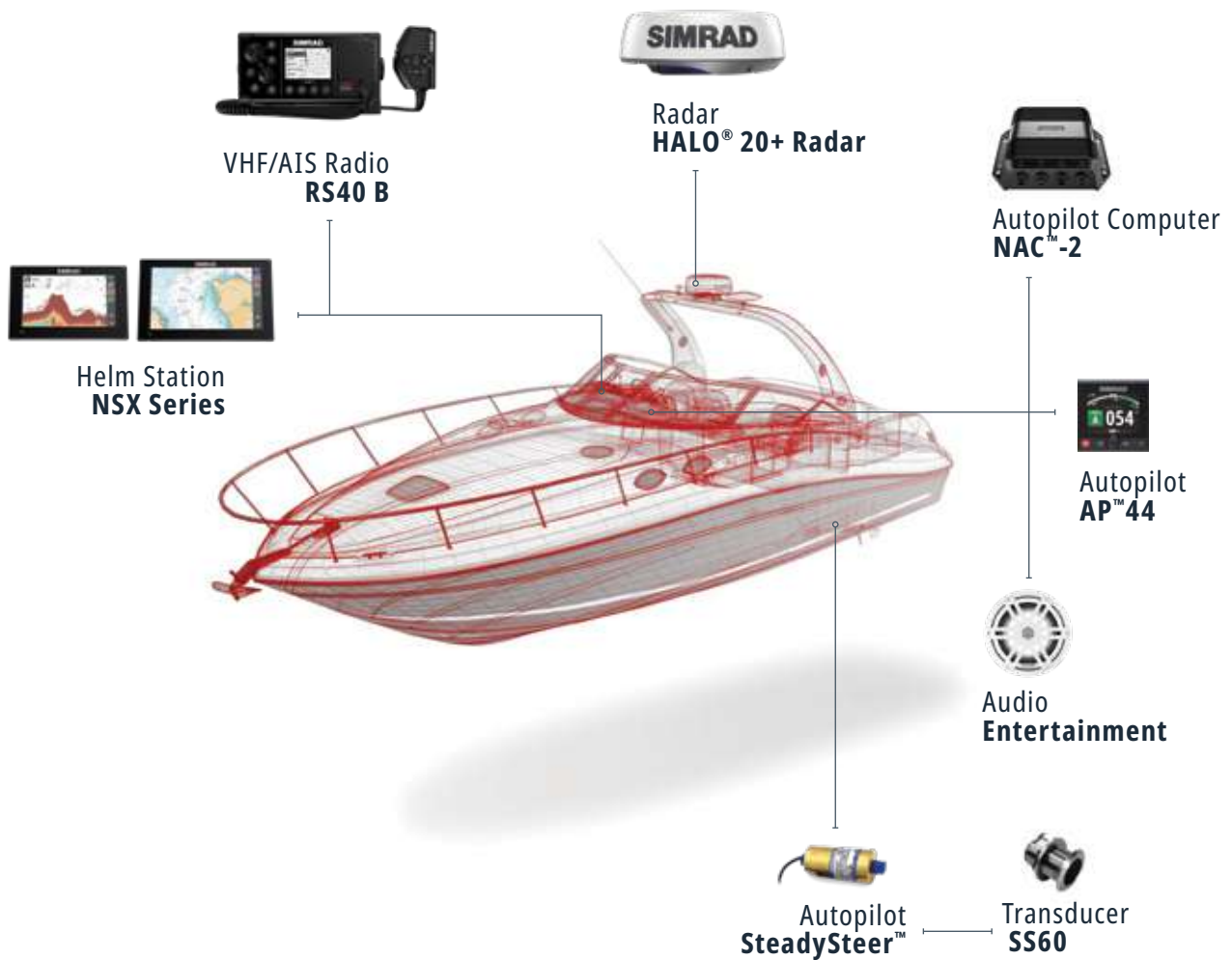
# POWERBOAT SYSTEMS

## SMALL & MEDIUM POWERBOATS | 26-50 FT

Single station powerboats.

### SIMRAD® POWERBOAT SYSTEMS

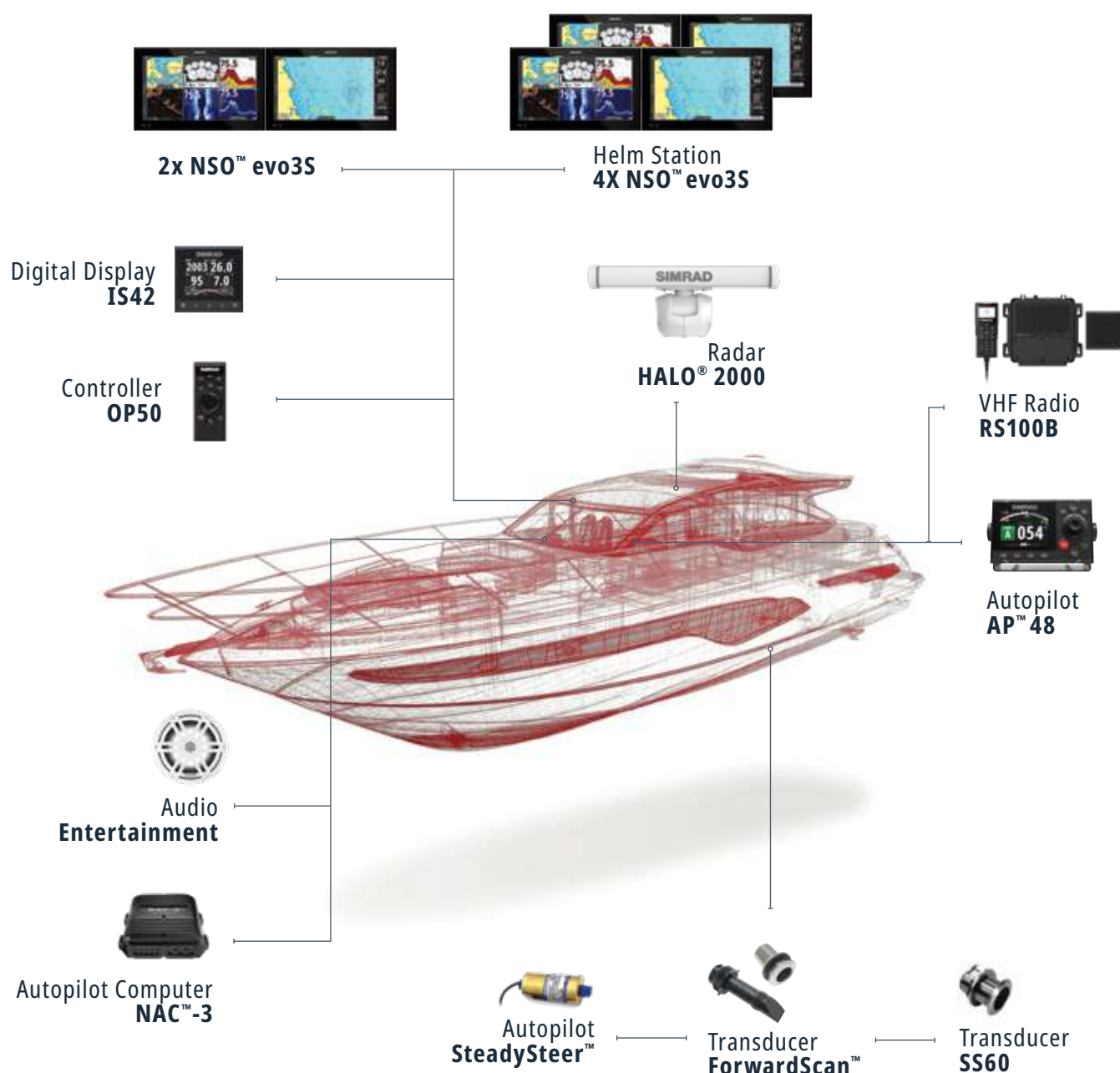
The Simrad® NSX® Series will take your leisure boating experience to a whole new level. With an innovative, modern interface featuring powerful navigation capability with C-MAP® support, you'll see everything like never before. The NSX features integrated Sonar, full Radar and Autopilot systems compatibility, and more.



# POWERBOAT SYSTEMS

**50-100 FT | MOTOR YACHTS**

Large dual station motor yachts.



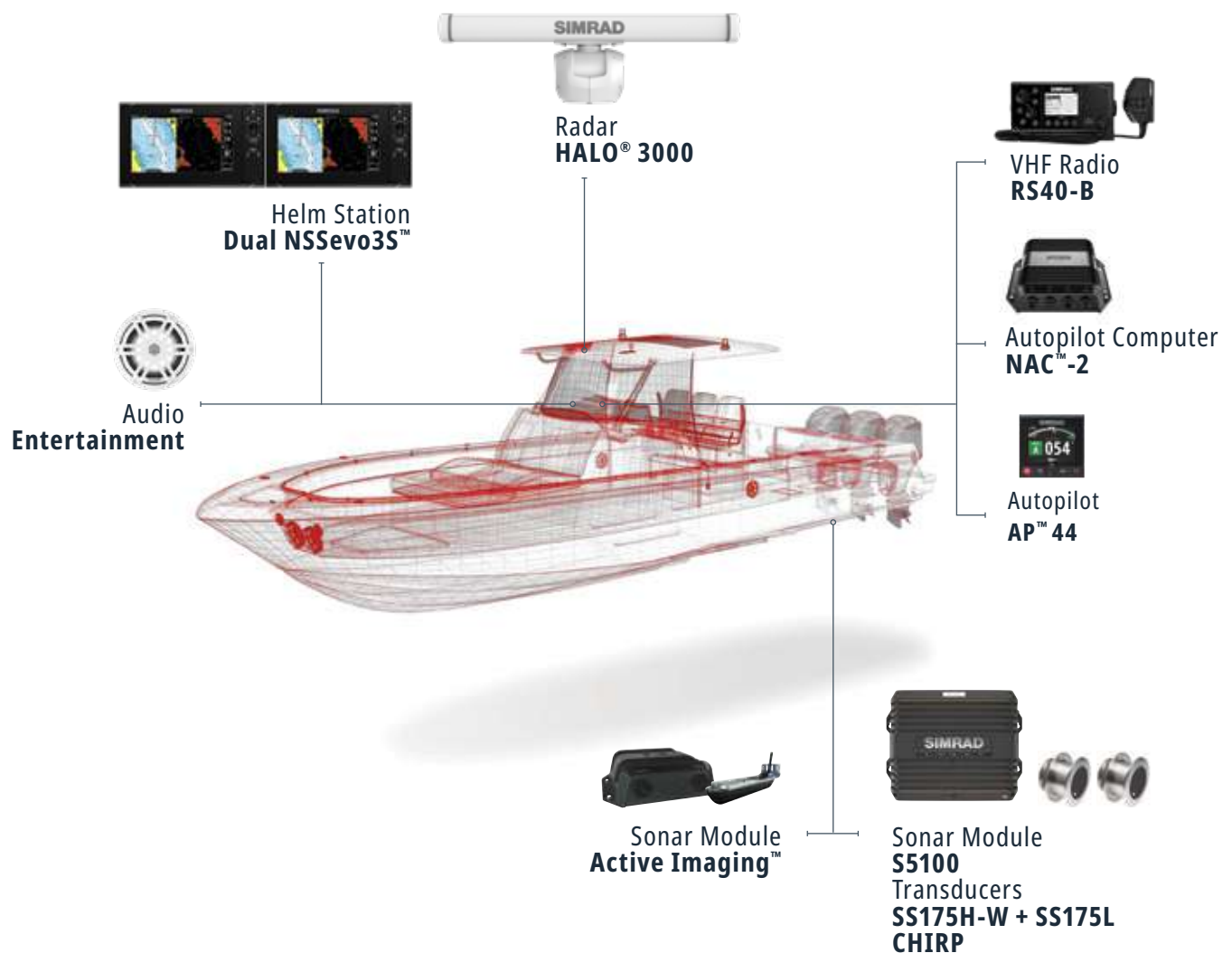
# SPORTFISHING SYSTEMS

## CENTRE CONSOLE | 20-40 FT

Single station sportfishers.

### SIMRAD® SPORTFISHING SYSTEMS

Customisable Simrad® technology lets you create the perfect sportfishing system. So whether you're drifting over deepsea spots or trawling for big game, there's a sonar solution that will help you see more and target better. The bird finding feature on our HALO® radars together with our extensive range of fishfinders - from the versatile GO™ Series through the redefined user experience of the NSX® to the high-performance of NSS - you have everything you need to find fish. All built tough and designed for ease of use in any conditions.

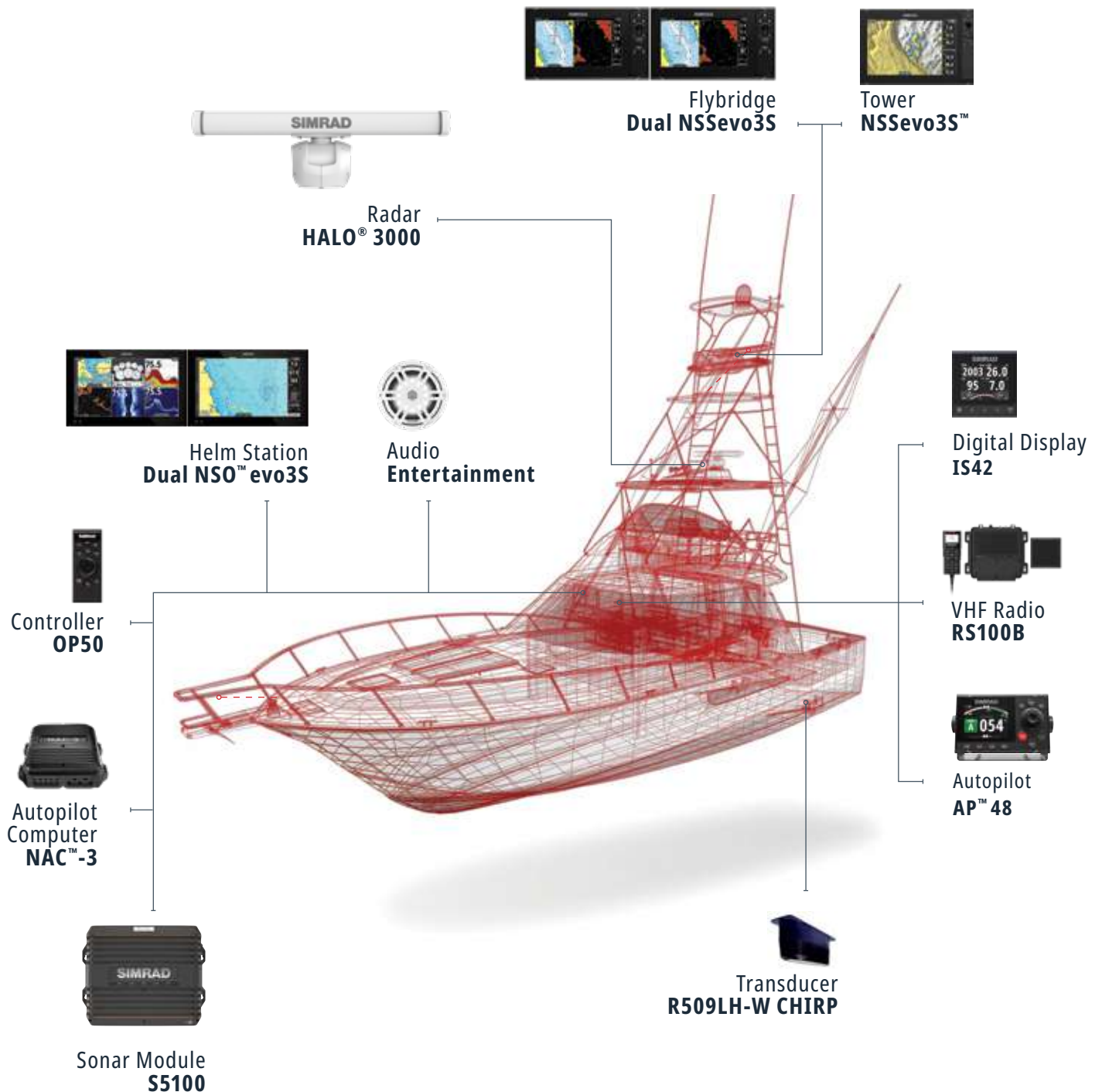




# SPORTFISHING SYSTEMS

**40-70+ FT | LARGE FLYBRIDGE**

Large dual station motor yachts.



# RUNABOUT SYSTEMS

SMALL RUNABOUTS, BOW RIDERS OR BAY BOATS | UP TO 26 FT

Single station powerboats.

## SIMRAD® RUNABOUT SYSTEMS

Choose from a wide range of chartplotters - from everyday Cruise™, the versatile GO™ Series or the next-gen NSX® navigation displays - for a perfect fit for runabouts of all types. The NSX displays combine comprehensive navigation tools with a wide range of built-in leisure and fish-finding sonar technology. With industry-standard connectivity, including support for compact and low-power Simrad® radar systems, it's easy to integrate and accessorise to suit your needs.





ENABLING  
POWERBOATING AND  
SPORTFISHING  
ENTHUSIASTS TO  
JOURNEY FURTHER AND  
EXPLORE THEIR  
LIMITS.



# INTEGRATED VESSEL

## DIGITAL BRIDGE CONNECTED

Enhance your boat with vessel-wide monitoring, digital switching and control capabilities.

### SMART MARINE TECHNOLOGY

In boating, as in cars, there is a growing need for control systems that assist the captain in making the most of all on-board technologies. The Simrad® Integration system acts as the brain of a boat - seamlessly integrating all equipment and functions for complete control and monitoring via a single screen.

We offer a variety of solutions and user experiences for any size vessel. The system is modular so that it is suitable for smaller boats through to megayachts; the latter requires additional software, but the core is the same.





# INTEGRATED VESSEL

## DIGITAL BRIDGE CONNECTED

Enhance your boat with vessel-wide monitoring, digital switching and control capabilities.

### THE SIMRAD® INTEGRATION SOLUTION

Offers comprehensive STANDARD and CUSTOM solutions beyond core navigation systems.

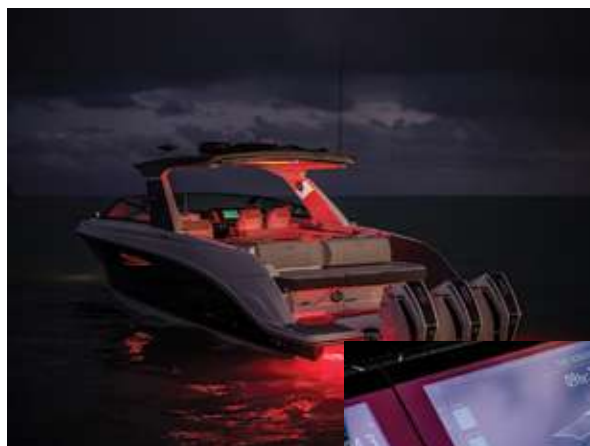
Seamlessly connects other technical systems with the Simrad® ecosystem:  
Digital Switching, Engines / Propulsion, Steering/Trimming,  
Fluid Levels, Power Management, Lighting, Deckhardware,  
Entertainment, and more.

Enables Monitoring & Control of 3rd party systems on Simrad® MFDs via:

- Generic Navico Operating System pages.
- 3rd Party specific stand-alone Apps.
- Boatbuilder specific Custom User Interfaces.

Helps Boatbuilders and 3rd Party OEMs to build integrated ecosystems using building blocks from:

- Navico standard core navigation system hardware.
- Hardware gateways to connect technical systems with the Navico network.
- Standard protocol software interfaces ie. N2K, J1939, HTML5.
- Standard SDKs for 3rd Parties to build their own solutions.
- Standard software to build Graphic User Interfaces and logic levels for monitoring and control systems.
- Strategic Roadmap, system design and software development for specific solutions.



# SMARTPHONE INTEGRATION

## SIMRAD® APP

Your perfect digital companion, for any boating activity.

It is time to get out on the water with the new Simrad® app, built to help you journey further! Whether you are out on the water for cruising, fishing, diving, water sports or other activities, this is the app of choice. If you are equipped with a Simrad® display, get started by connecting your display to your phone. If not, you can just switch on the app and get going.

### FREE FEATURES

- Up-to-date nautical charts
- Personal waypoints, routes and tracks
- Manual and Autorouting
- Measure distance tool
- Thousands of Points of Interest
- Marine weather forecast
- GPX import and export
- Chart personalization
- Device registration
- Device support: manuals, guides, videos
- Mirroring and Control
- Offline sync of WRnT

Find the hottest destinations for all your favourite activities with our high-resolution bathymetry charts. Power into your next trip and save your favourite routes, waypoints and trails in the app so you maximise your time on the water. It's easy to start planning from home, or on the go, to guarantee a fun day out. Downloadable offline charts give you mapping information when you are out on the water and away from it.

### PREMIUM FEATURES

#### Everything in FREE plus:

- Offline maps (Global chart)
- AIS
- 5-day weather along the route
- Navigation: GPS data, navigation line, track record
- Traffic: keep an eye on other app users around
- 5-day weather overlay
- High-resolution Bathymetry
- Custom Depth Shading
- Shaded Relief



### SIMPLE ONBOARDING

- Register your device
- Access your chartplotter information from one place
- Update your software

## SIMRAD® APP EXPERIENCE

The Simrad® app updates on a continuous basis to make sure you get the best experience and to bring you the most up-to-date maps and functionalities. Be sure to check in for updates regularly.

### WEATHER

The Simrad® App provides detailed weather data to help you plan but also stay safe on the water - whether through the app's general weather forecast, along the route when Autorouting or the charts real-time Weather Overlay feature. It includes data on sea-state, precipitation, wind, temperature, tides, waves, the moon phase and much more.

### SYNCHRONISE

Synchronise your planning data with your Simrad® multifunction display anytime, anywhere. The Simrad® App allows you the freedom and flexibility to save your waypoints, routes and tracks in the app at home or on your display on the water and simply synchronise the two at any time.

C-MAP® maps can be used online for free.

You can also purchase and enjoy downloadable maps in remote areas without connection.

### CHARTS

With the Simrad® App, you have access to the latest C-MAP® cartography with high-resolution bathymetry charts, custom shading, and thousands of Points of Interest including ramps and fuel near you. The maps are continuously updated and carefully crafted to provide you the most important information at any given time.



# PART NUMBERS

## SIMRAD® PRODUCT LIST

A quick resource to help you find the correct Simrad® parts.

### NSO EVO3S MFD

DESCRIPTION	PART NO.
NSO EVO3S MFD 16" Display	000-15047-001
NSO EVO3S MFD 19" Display	000-15049-001
NSO EVO3S MFD 24" Display	000-15051-001
NSO EVO3S MFD 16" System Pack	000-15126-001
NSO EVO3S MFD 19" System Pack	000-15127-001
NSO EVO3S MFD 24" System Pack	000-15128-001

### NSO EVO3S MPU

DESCRIPTION	PART NO.
NSO EVO3S MPU Processor	000-15045-001
NSO EVO3S MPU, 16" Monitor Bundle	000-15115-001
NSO EVO3S MPU, 19" Monitor Bundle	000-15117-001
NSO EVO3S MPU, 24" Monitor Bundle	000-15119-001
MO16-T 15.6" Touch Monitor	000-11260-001
MO19-T 19" Touch Monitor	000-11262-001
MO24-T 24" Touch Monitor	000-11264-001

### NSS EVO3S

DESCRIPTION	PART NO.
NSS evo3S 9", ROW Basemap	000-15405-001
NSS evo3S 12", ROW Basemap	000-15406-001
NSS evo3S 16", ROW Basemap	000-15407-001
NSS evo3S 9", + HALO 20+ radar	000-15556-001
NSS evo3S 12", + HALO 20+ radar	000-15557-001

### NSX

DESCRIPTION	PART NO.
NSX 3007, No Transducer	00-15215-001
NSX 3007 with Active Imaging™	000-15368-001

### NSX (continued)

DESCRIPTION	PART NO.
NSX 3007 with HDI Transducer	000-15374-001
NSX 3009, No Transducer	000-15219-001
NSX 3009 with Active Imaging™	000-15369-001
NSX 3009 with HDI Transducer	000-15375-001
NSX 3012, No Transducer	000-15223-001
NSX 3012 with Active Imaging™	000-15370-001

### GO SERIES

DESCRIPTION	PART NO.
GO7, No transducer	000-14448-001
GO7, HDI	000-14446-001
GO9, no transducer	000-14444-001
GO9, MED/HI/DWNSCN	000-14445-001
GO9, Active Imaging 3-in-1	000-14841-001

### CRUISE

DESCRIPTION	PART NO.
Cruise 5 with 83/200 transducer	000-14998-001
Cruise 7 with 83/200 transducer	000-14999-001
Cruise 9 with 83/200 transducer	000-15000-001

### DEDICATED DISPLAYS

DESCRIPTION	PART NO.
R2009, Radar Control Unit, 9"	000-12186-001
R3016, Radar Control Unit, 16"	000-12188-001
S2009, Sonar, 9", No Transducer	000-12185-001
S2016, Sonar, 16", No Transducer	000-12187-001



# PART NUMBERS

## SIMRAD® PRODUCT LIST

A quick resource to help you find the correct Simrad® parts.

### SONAR

DESCRIPTION	PART NO.
S5100 Sonar Module	000-13260-001
ForwardScan Transducer (XDCR kit)	000-11674-001
ForwardScan Transducer (No sleeve or plug)	000-11675-001
StructureScan3D transducer and module	000-12395-001
ActiveTarget Live Sonar	000-15593-001
StructureScan 3D Stainless Steel Thru-Hull transducer	000-13559-001
Active Imaging Transducer	000-14490-001
Active Imaging 3-IN-1 with 7.6 (25 foot) cable	000-14489-001
Active Imaging 3-IN-1 with 1.8m (6 Foot) cable	000-14814-001

### HALO DOME RADAR

DESCRIPTION	PART NO.
HALO 24	000-14535-001
HALO 20+	000-14536-001
HALO 20	000-14537-001

### HALO 2000 & 3000

DESCRIPTION	PART NO.
HALO 2003 RADAR,W/3' ARRAY/RI50/20M CBL	000-15758-001
HALO 2004 RADAR,W/4' ARRAY/RI50/20M CBL	000-15759-001
HALO 2006 RADAR,W/6' ARRAY/RI50/20M CBL	000-15760-001
HALO 3004 RADAR,W/4' ARRAY/RI50/20M CBL	000-15763-001
HALO 3006 RADAR,W/6' ARRAY/RI50/20M CBL	000-15764-001

### VHF & AIS

DESCRIPTION	PART NO.
RS20S VHF	000-14491-001
RS40 VHF	000-14470-001

### VHF & AIS

DESCRIPTION	PART NO.
RS40B VHF	000-14473-001
NAIS-500 with GPS-500	000-13609-001
RS100 SYSTEM	000-15643-001
HANDSET+SPEAKER KIT,RS100,WIRED	000-15647-001
RS100-B SYSTEM,AIS+GPS-500	000-15792-001
HANDSET,HS100,WIRED	000-15649-001
SPEAKER,SP100,WIRED	000-15651-001
VHF W/L HANDSET,DSC,HS40	000-14475-001
NSPL-500	000-13612-001

### INSTRUMENTS

DESCRIPTION	PART NO.
IS35 Colour Instrument Display	000-13334-001
IS42 Digital Display	000-13285-001
Precision-9 Compass	000-12607-001

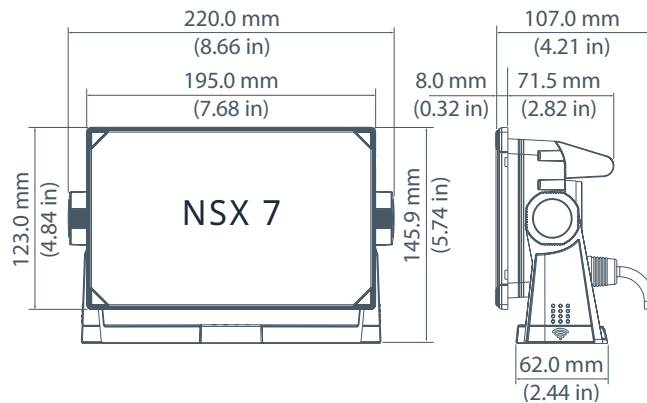
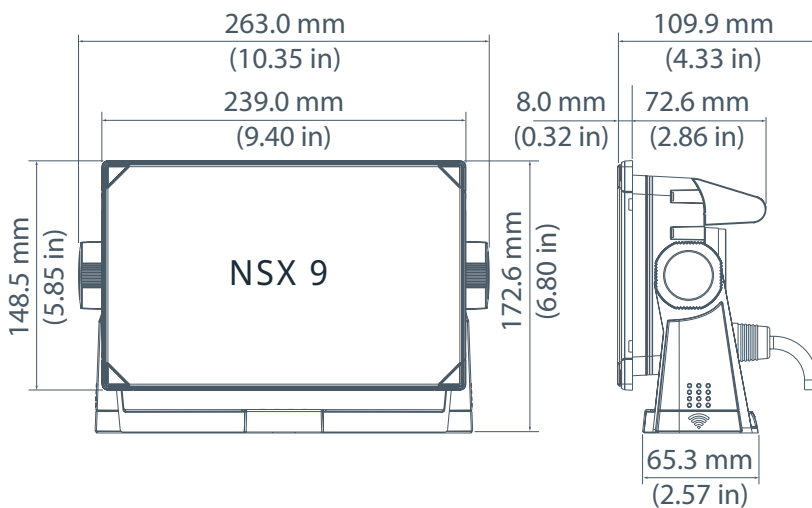
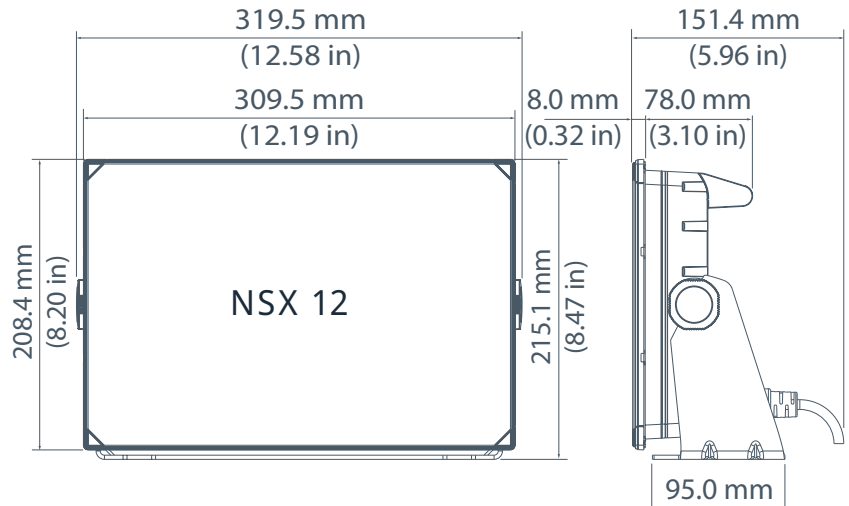
### AUTOPILOT

DESCRIPTION	PART NO.
AP44 Rotary Pilot Head	000-13289-001
AP48 Rotary Pilot Head	000-13894-001
OP12 Autopilot Controller	000-13287-001
Precision Hydraulic Autopilot Pack	000-15951-001
Outboard Pilot Hydraulic Pack	000-15952-001
Outboard Pilot Cable steer Pack	000-11749-001
OP50 Remote, Portrait	000-12364-001
WR10 Autopilot remote and base station	000-12316-001
SteadySteer™	000-15734-001

# PRODUCT DIMENSIONS

**NSX®**

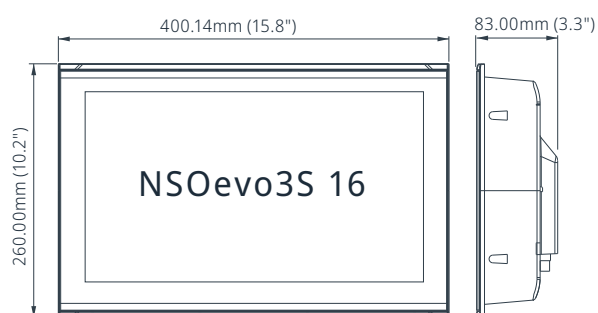
Product dimensions and characteristics that serve to identify our products.



# PRODUCT DIMENSIONS

**NSOevo3S™**

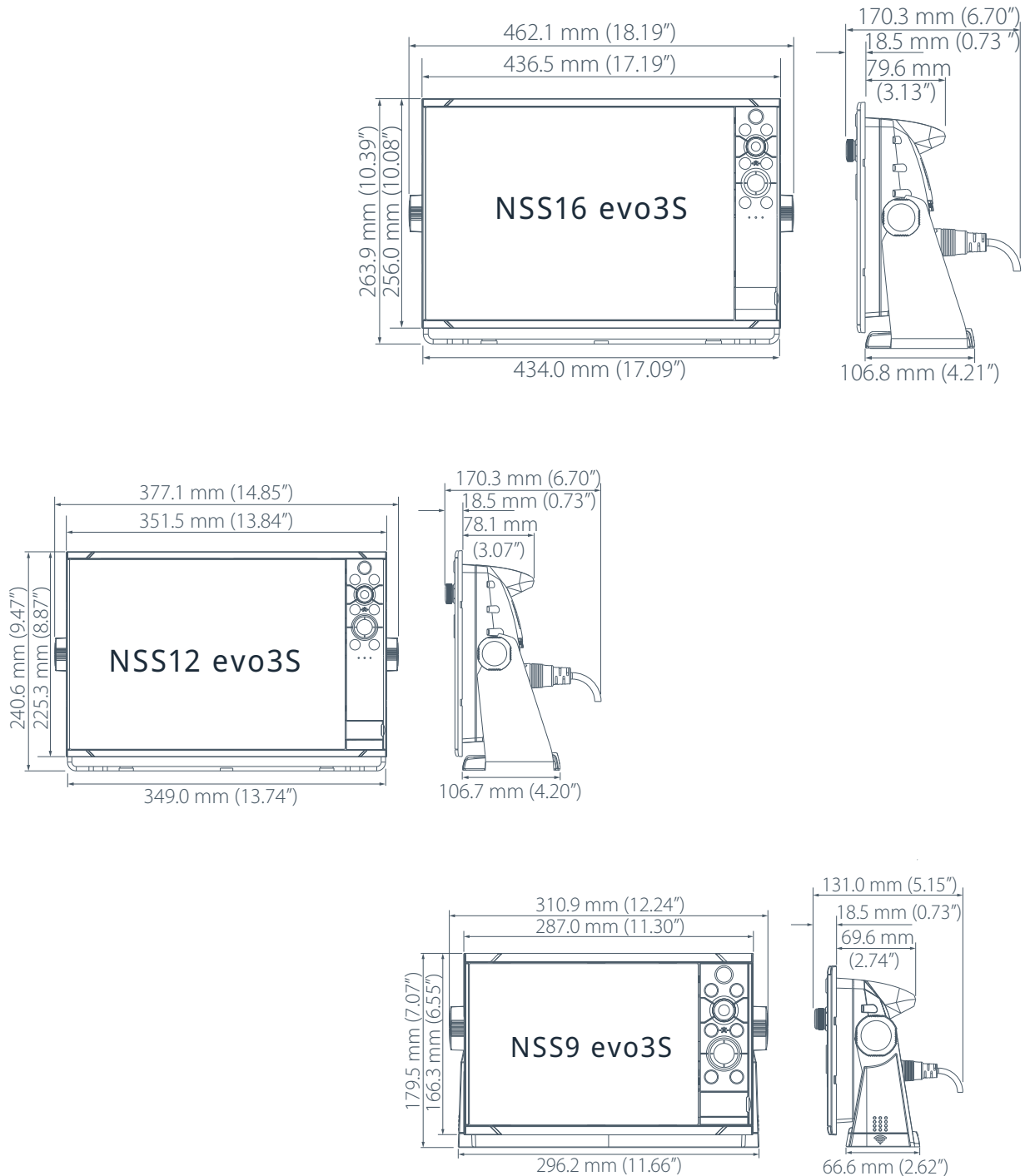
Product dimensions and characteristics that serve to identify our products.



# PRODUCT DIMENSIONS

## NSSEVO3S™

Product dimensions and characteristics that serve to identify our products.

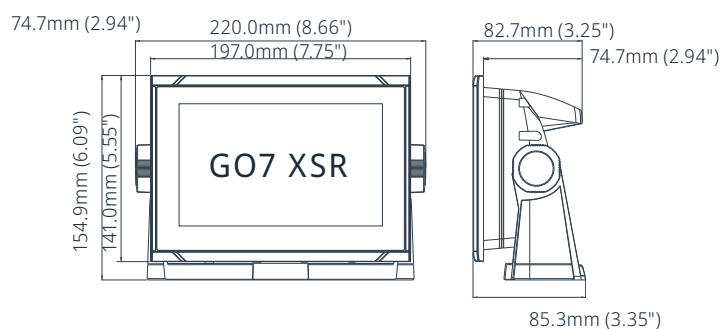
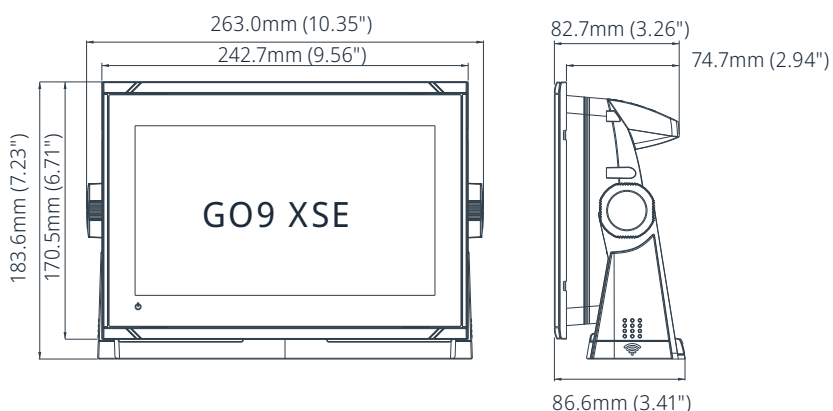
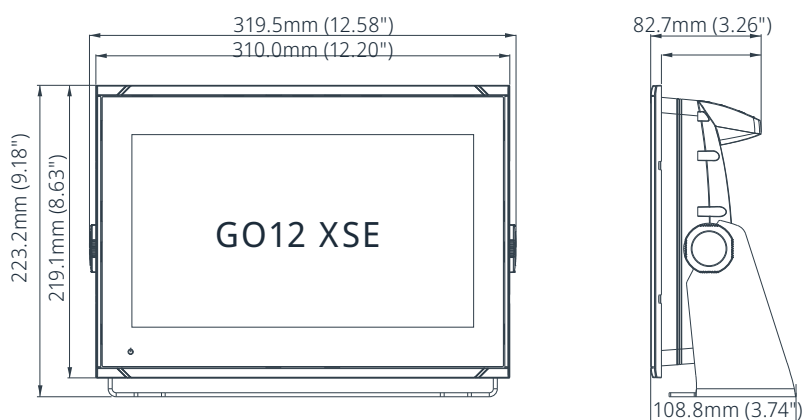




# PRODUCT DIMENSIONS

## GO™ SERIES

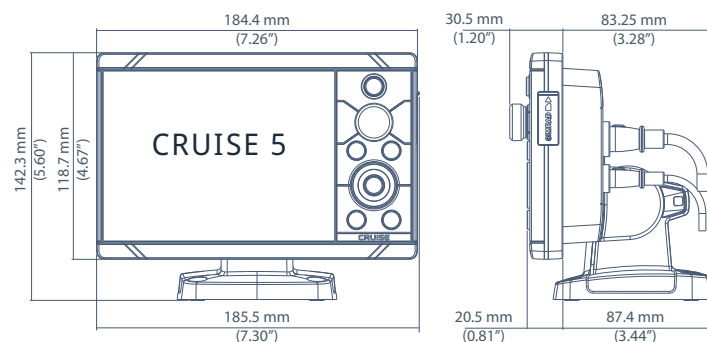
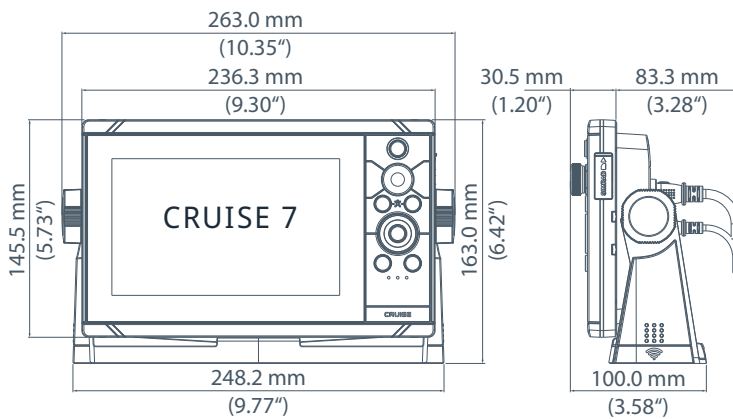
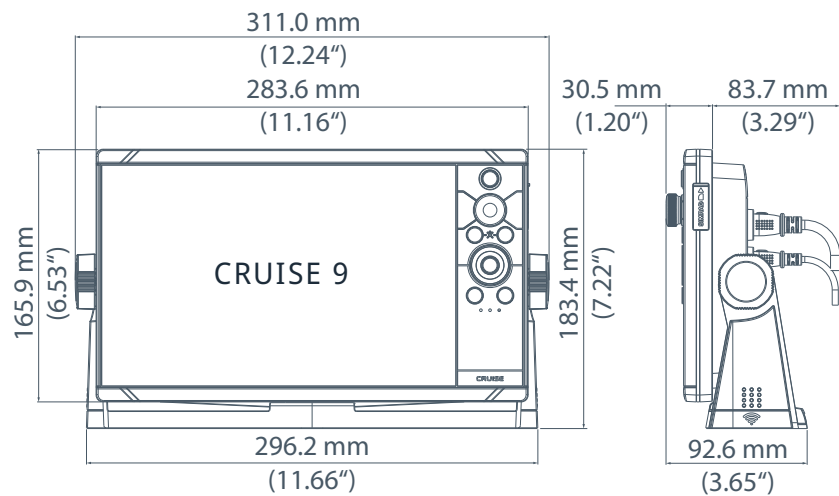
Product dimensions and characteristics that serve to identify our products.



# PRODUCT DIMENSIONS

## CRUISE™

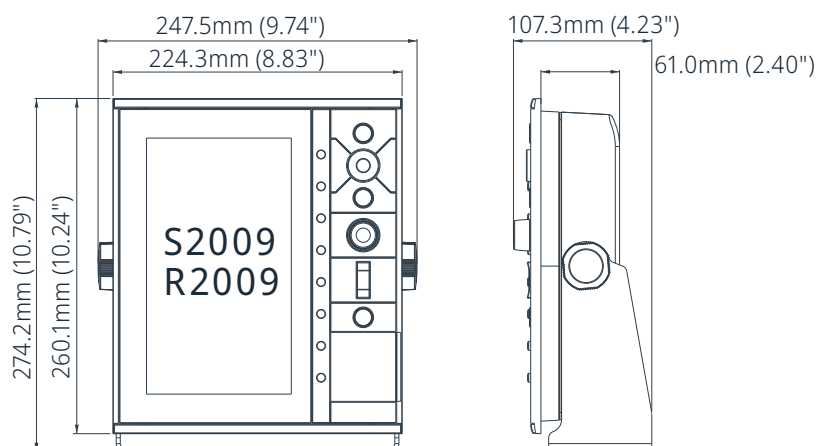
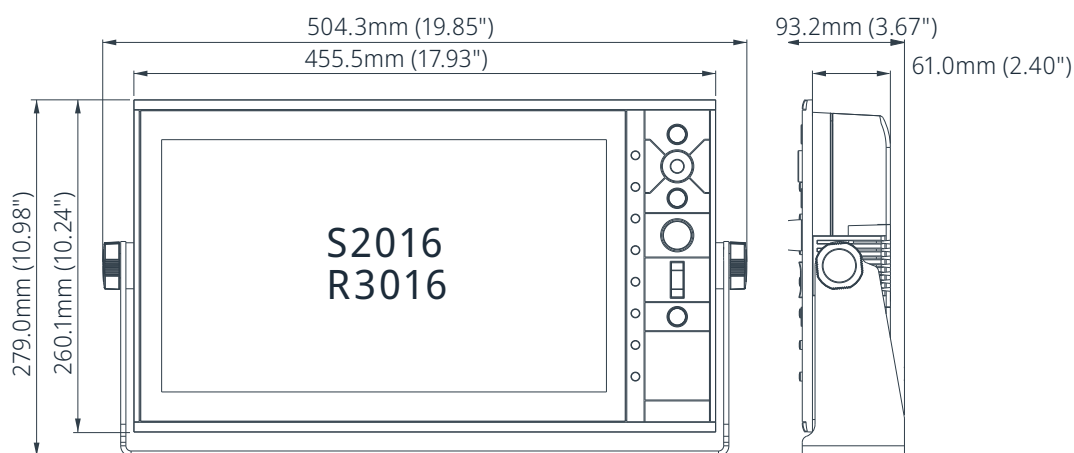
Product dimensions and characteristics that serve to identify our products.



# PRODUCT DIMENSIONS

## S2009/R2009 AND S2016/R3016

Product dimensions and characteristics that serve to identify our products.





[simrad-yachting.com](https://simrad-yachting.com)



[SimradYachting](#)



[simradyachting](#)



[simrad-yachting](#)



[Simrad Marine Electronics](#)

985-12718-001

Copyright © 2023 Navico Holding AS. All trademarks are property of their respective owners. Products, features and specifications are the most recent available and are subject to change without notice. No liability can be accepted for errors or omissions in this document.  
\*Reg. U.S. Pat. & Tm. Off, and <sup>TM</sup> common law marks. Visit [www.navico.com/intellectual-property](https://www.navico.com/intellectual-property) to review the global trademark rights and accreditations for Navico Holding AS and other entities.

FSC  
Details

(added by  
printers)