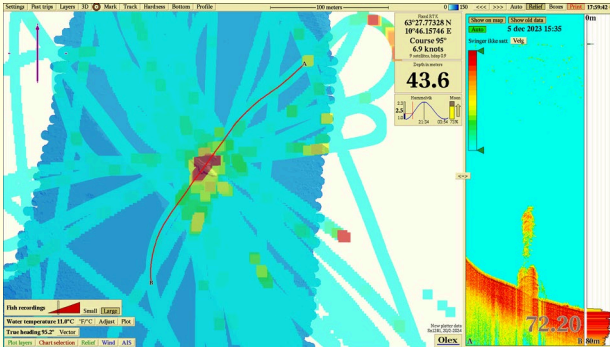


The new OLEX OS1 **Fish Mapping Echo Sounder** connected to an OLEX system with the OS key and a transducer, provides a wideband echosounder with a unique twist. An adjustable window on the screen, shows the fish, and bottom just like a traditional sounder. Using the OS software module, OLEX remembers every ping and creates a map of where the fish has been so that users can predict where they will be in the future. Required software version for OS1 compatibility is OLEX 16.0 or higher.



- Max transmitter power : 1kW
- Frequency range: 40 to 210 kHz
- Pulse: CW and CHIRP
- Power input: 10-35VDC, 17W
- Dimensions: W:19.64 x D:16.49 x H:5.0 cm
- Shows fish detections for all years

### Fish mapping

The new functions for fish mapping provide a unique insight into how the fish migrate and how they move between seasons. The historical fish detections, combined with self-measured seabed maps, let the fisherman discover and research on how bottom details tend to attract fish, or not.

### Storage requirements

Each echo sounder ping will occupy around 500 bytes of system storage. A full day may produce 100 kB and one year some 3 to 10 GB. So, 10 years of soundings' history will need approximately 100 GB of system storage.

### Improve Simrad Combi-C 38/200

Connected to a Simrad Combi-C 38/200 transducer, the OLEX OS1 can use Compressed High Intensity Radar Pulse – CHIRP, from 34 to 42 kHz, which provides a low frequency echogram with:

- Increased resolution on the longer ranges
- Better target separation
- Less noise clutter

### Transducers

- AIRMAR, various CHIRP & CW transducers
- RADARSONIC, various CW transducers
- SIMRAD, Combi-C 38/200 (CHIRP from 34 to 42 kHz)
- ECHONAUTICS, various CHIRP & CW transducers

Standard delivery includes:

- OS1 Fish Mapping Echo Sounder
- Serial cable with female DB-9 connector, 3.0 m
- Power cable with bare wires, 1.5 m
- Transducer adapter cable with BlackBox 8 pin Male connector & Bare Wires, 0.9 m
- Fuse holder with 5A fuse
- Installation Manual

### Notes:

- All hardware, specifications and data are subject to change without prior notice to improve reliability, function, design or otherwise. Please confirm details prior to order confirmation.
- Product names and markings noted above may be trademarks of their respective owners.
- No license, express or implied, by estoppel or otherwise, to any intellectual property rights is granted by this document.