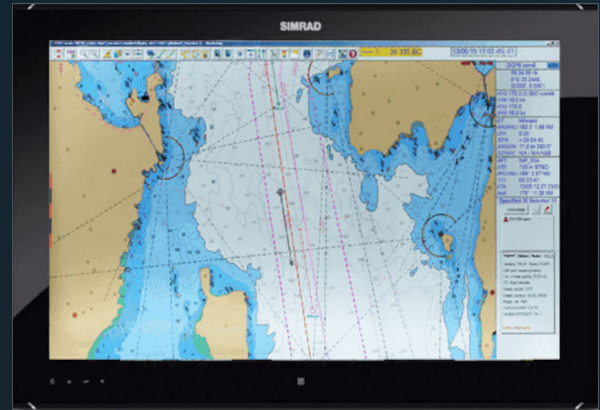


# SIMRAD® ECDIS900 MK5B & MK15B

Simrad® ECDIS900 MK5B/ MK15B is an IMO-type approved navigation system, designed for use aboard SOLAS vessels subject to ECDIS carriage mandates such as MegaYachts, workboats and merchant cargo ships.

Easy to use with a standard Windows PC interface, the ECDIS900 delivers precise navigation with comprehensive route planning and optimisation tools, integrated chart management, universal radar overlay, and optional highly customisable conning display.



► MK5B

## Key Features

- 24" or 27" Monitor and PC (MK5B)
- 19", 24" or 27" Flat Panel PC (MK15B)
- Standard Windows 10 interface with Keyboard and Trackball Mouse Controls
- Advanced route planning and optimisation tools, with special-purpose modules including SAR planning
- Precise navigation tools including position, prediction and docking assistance
- Universal radar overlay (Optional hardware required)
- Supports ENC's (PRIMAR, IC-ENC, UKHO AVCS) and UKHO ARCS
- Choose between S-52 and INT1 chart presentation
- Dual- or triple-station PLECDIS options for paperless navigation
- Integration with BNWAS, Navtex, AIS, Autopilot, and Central Alarm system. (BNWAS requires additional hardware)



► MK15B

# Specifications

## ► MK5B

### DISPLAY

Display Resolution	1920x1080p
Display Type	TFT Active Matrix LCD
Display Brightness	300 nits
Display Viewing Angles	M5024: 89° M5027: 178°

### TECHNICAL / ENVIRONMENTAL

Operating Temperature	-15°C to +55°C
Waterproof rating	PC: N/A Displays: IPX6 Front-Only, Dash-Mount
PC Dimensions	W 22cm x H 8.9cm x D 30cm - 3.7kg
M5024 Dimensions	W 62.5cm x H 38.6cm x D 6.6cm - 6.6kg
M5027 Dimensions	W 64.7cm x H 42.0cm x D 6.6cm - 9.0kg

### POWER

Power Supply	100-240V AC 50/60Hz or 24V DC
Power Consumption	PC: 39W Typ (75W Peak) Display: 30W

### CONNECTIVITY

NMEA 0183® & RS422	4 ports
Network	4x Ethernet 10/100/1000Mbps RJ45
USB	4x USB2.0 Type A 4x USB3.0 Type A

## ► MK15B

### DISPLAY

Display Resolution	19" 1280x1024p 5:4 24" and 27" 1920x1080p 16:9
Display Type	TFT active-matrix LCD with LED backlight
Display Brightness	350 cd/m2
Display Viewing Angles	19" 85° 24" and 27" 89°

### TECHNICAL / ENVIRONMENTAL

Operating Temperature	-5°C to +55°C / 23°F to 131°F
Waterproof rating	IP66 (Front), IP22 (Rear)
19" Dimensions	W 42.9cm X H 38.2cm X D 8.3cm - 8.5kg
24" Dimensions	W 59.3cm X H 38.4cm X D 7.4cm - 10.0kg
27" Dimensions	W 65cm X H 43.7cm X D 7.3cm - 12.1kg

### POWER

Power Supply	110/240V AC - 50/60Hz 24V DC
Power Consumption	19" 79W Typical (156W Max) 24" and 27" 88W Typical (250W Max)

### CONNECTIVITY

NMEA 0183® & RS422	4 ports
Network	5x Ethernet RJ45
USB	2x USB2.0 Type A 2x USB3.0 Type A

## Global Service & Support

### Includes:

- 2 Year Warranty
- Extended Warranty Options
- Service & Support Hotlines
- 2 Year Onboard Support\*

\* Applies to certified vessels only

DISTRIBUTED BY

**SUPPORT** Navico Americas +1 918 438 8669 / 855-241-3598 (Toll free)  
Navico Asia Pacific +64 9 925 4595  
Navico EMEA +31 786 530 004